



# EXCELERATOR™

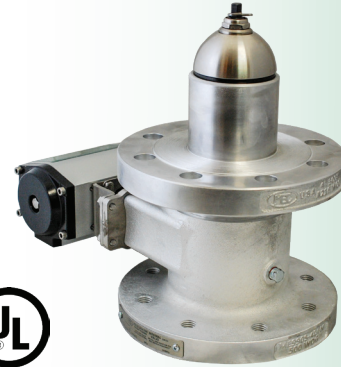
## 4" & 6" DOUBLE FLANGED INTERNAL VALVES

### Description

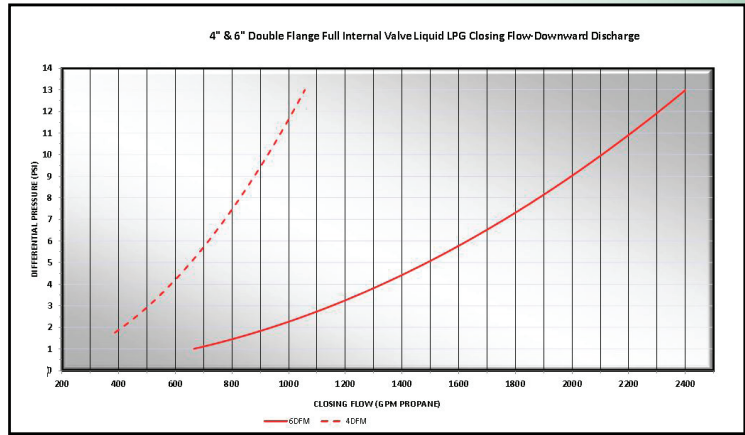
Intended for use on transport trucks and large storage tanks with 4" or 6" flanged connections in directional or bi-directional flow applications. Provides both manual shut-down and excess flow closing in the event of the piping being separated from the valve. Equipped standard with a rotary actuator open/closing devices. All valve models are equipped with a break-away feature in the cast body which permits the pump or piping to shear off in the event of side impact, leaving the valve poppet intact and protecting the tank from catastrophic product loss.

### Features

- Durable steel body with cadmium surface plating
- All stainless internal component construction
- One piece threaded packing gland
- Precision machined hard coated stem & stem guide
- Fully retained nitrile seat disc
- Largest variety of excess flow closing values
- Corrosion resistant sleeved flange bolt holes
- Xylan coated corrosion resistant mounting studs
- Roller cam actuation
- Industry's fastest bleed time
- Removable data plate
- Industry's easiest valve to service
- Standard construction utilizes nitrile seals
- Available with FKM or FFKM seals
- Available with 316 Stainless Steel bodies
- UL LISTED for LPG & NH<sub>3</sub> service
- Rulon™ bearings on stem and stub shafts
- Fits standard 300# flange openings



**ME990SAR-4DFM**  
4"-300LB Modified Double Flange Series



"X"	4" Valve Liquid Closing Flow Values
<b>375</b>	375 GPM LPG Closing Flow
<b>500</b>	500 GPM LPG Closing Flow
<b>650</b>	650 GPM LPG Closing Flow
<b>800</b>	800 GPM LPG Closing Flow
<b>900</b>	900 GPM LPG Closing Flow
<b>1000</b>	1000 GPM LPG Closing Flow

\* For NH<sub>3</sub> Multiply GPM by .90

"X"	6" Valve Liquid Closing Flow Values
<b>650</b>	650 GPM LPG Closing Flow
<b>1000</b>	1000 GPM LPG Closing Flow
<b>1500</b>	1500 GPM LPG Closing Flow
<b>2400</b>	2400 GPM LPG Closing Flow

\* For NH<sub>3</sub> Multiply GPM by .90

Part No. *	Description
<b>ME990SAR-4DFM-"X"</b>	<b>Excelsior™ 4"-300 lb. Modified Flange Internal Valve w/ Rotary Actuator</b>
<b>ME990SAR-6DFM-"X"</b>	<b>Excelsior™ 6"-300 lb. Modified Flange Internal Valve w/ Rotary Actuator</b>

\* Note: Indicate desired excess flow closing value when ordering - see chart for values i.e. ME990SAR-4DFM-375 (375 GPM)  
Available in all Stainless Steel Construction - i.e. ME990SSAR-4DFM-375  
To order FFKM add "K" after the prefix part number i.e. ME990SKAR-4DFM--375  
To order FKM add "V" after the prefix part number i.e. ME990SVAR-4DFM-375



For Your Local Marshall Excelsior Distributor  
Call 269-789-6700, E-mail: sales@marshallexcelsior.com  
www.marshallexcelsior.com

