

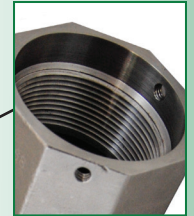
Excelerator™ High Flow Railcar ESV

Description

Excelerator Railcar Emergency Shutoff Valves (ESV's) are designed to provide rapid and positive shutdown of gas lines should a downstream rupture or piping break occur during product transfer. Featuring a built-in fusible element at the valve operating hub to ensure the ESV will automatically close when exposed to heat between 212° F. - 250° F. In addition to the fusible element, the Excelerator Railcar ESV's are equipped with a poppet design like the MEC internal safety valves that provides an integral excess flow feature. MEC offers a variety of closing flow values ranging from very high liquid flow rates to more moderate vapor flow rates depending on the application. MEC Excelerator Railcar ESV's are equipped standard with quick disconnect internal pneumatic operators for rapid and reliable open/close of the poppet allowing for convenient on site or remote shutdown of the valve.

Features

- 316 Stainless Steel Body
- All stainless steel internal component construction provides maximum corrosion resistance
- Hardened stainless steel flanged end connection for durability and ease of field service
- UL Listed for use with LP Gas and Anhydrous Ammonia - 400 PSI WOG
- Integral fusible element for automatic closure when exposed to fire
- Durable PTFE packing gland with resilient seals providing long lasting service life
- 100% field repairable - no special tools required
- E-Z grip ribs for installation even with heavy protective hand wear



ME983 Series

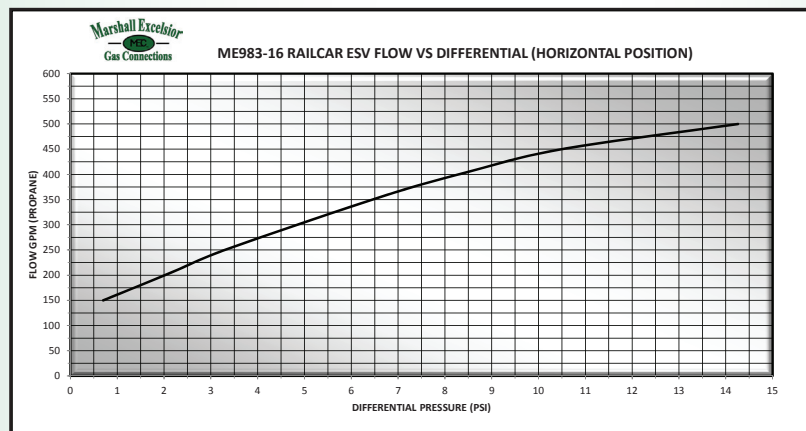


Railcar Emergency Shutoff Valves (ESV's)

Part No.	Description	Closing Flow GPM/LPG
ME983-16/150	High Flow Railcar ESV 2" FNPT X 2" FNPT	156*
ME983-16/250	High Flow Railcar ESV 2" FNPT X 2" FNPT	250
ME983-16/500	High Flow Railcar ESV 2" FNPT X 2" FNPT	500
ME983-16**	High Flow Railcar ESV 2" FNPT X 2" FNPT	~

Accessories / Repair Kits

Part No.	Description
ME983-SRK	High Flow Railcar ESV - Seal Repair Kit - Nitrile
ME983-VRK	High Flow Railcar ESV - Complete Valve Repair Kit - Nitrile
ME983-119-150	High Flow Railcar ESV - Replacement Excess Flow Spring 156 GPM
ME983-119-250	High Flow Railcar ESV - Replacement Excess Flow Spring 250 GPM
ME983-119-500	High Flow Railcar ESV - Replacement Excess Flow Spring 500 GPM
ME983-121	High Flow Railcar ESV - Replacement Quick Disconnect Nipple



For Your Local Marshall Excelsior Distributor Call 269-789-6700,
Fax 269-781-8340 or E-mail: sales@marshallexcelsior.com
www.marshallexcelsior.com

