

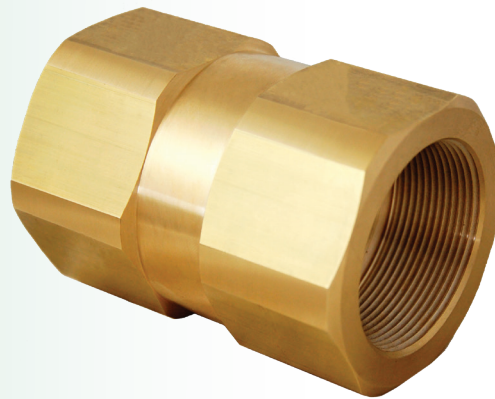


# 2" FNPT EXCESS FLOW VALVES

## DESCRIPTION

Inline excess flow valves are designed for liquid or vapor service applications where pipe size transitions and long piping runs are present and render tank mounted excess flow protection inadequate to safely service the system. The high flow rate design can be installed in any orientation and ensures maximum transfer efficiency while minimizing pump and line cavitation.

NOTE: Due to brass body construction this product cannot be used for NH3 applications.



**ME884-16/"X"**  
**2" FNPT x 2" FNPT**

## FEATURES

- Durable brass body construction
- All stainless steel internal components
- Precision machined
- Generous flow path provides low pressure drop, minimizing pump cavitation
- Threaded poppet design to maximize reliability in service

Part No.	Inlet Connection	Outlet Connection	Wrench Flats	Overall Length OAL	"X" Liquid Propane Approx. Closing Flow (GPM)
ME884-16/"X"	2" FNPT	2" FNPT	3.00" Hex	4.40"	170
					230

WARNING: Reducing outlet pipe size below nominal inlet diameter could result in excess flow feature failing to close as designed.

Liquid Butane Capacity = Flow Rate x 0.94



For Your Local Marshall Excelsior Distributor Call 269-789-6700,  
Fax 269-781-8340 or E-mail: [sales@marshallexcelsior.com](mailto:sales@marshallexcelsior.com)  
[www.marshallexcelsior.com](http://www.marshallexcelsior.com)

