

Sight Flow Swing Check Valves

DESCRIPTION

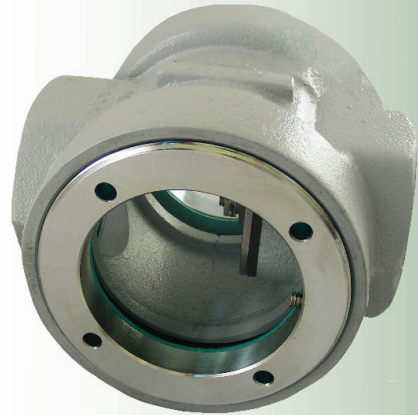
Designed with the most durable, impact resistant glass in the industry. This sight flow valve allows bulk plant operators an inspection point to visually monitor liquid flow conditions which allows the operator to achieve maximum pump efficiency. Also features a soft seat swing away check valve which limits flow to one direction. This check valve is usually closed until pressure activates the valve when flow is directed into piping or containers causing the valve to open. When flow stops or reverses, the check returns to the closed position minimizing product loss in the event of a line failure.

Installing a sight flow valve upstream of a plant pump, allows the operator to observe product flow and make pump adjustments for maximum flow without the liquid forming vapor bubbles causing uneven flow patterns and significantly reducing efficiency. Additionally, installing a sight flow valve at the loading arm of a plant allows the operator to maintain consistent observation of pump conditions. This valve is suitable for stationary and mobile applications.

Installing this valve on a compressor operation will provide a visual indication of when the tank car or transport is emptied of liquid and ready for vapor recovery.

FEATURES

- Specially formulated, large diameter impact resistant sight glass with O-ring packing seals for maximum safety and visibility
- Durable ductile iron body with cadmium plated finish
- All steel and stainless steel construction
- Rated up to 400 PSI / WOG
- Hexagon cast ends for ease of installation



Part No.*	Inlet & Outlet FNPT	Seal Material	OAL
ME875S-16	2"	Nitrile	5-3/4"
ME875SN-16	2"	Neoprene	5-3/4"
ME875SV-16	2"	Viton®	5-3/4"
ME875S-24	3"	Nitrile	7-3/8"
ME875SN-24	3"	Neoprene	7-3/8"
ME875SV-24	3"	Viton®	7-3/8"

* "NC" indicates no check e.i. ME875SNC-16

Viton® is a trademark of DuPont Performance Elastomers.

