

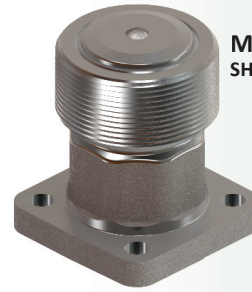
MEC Excelsior-Flange Series High Flow Back Check Valves

APPLICATION:

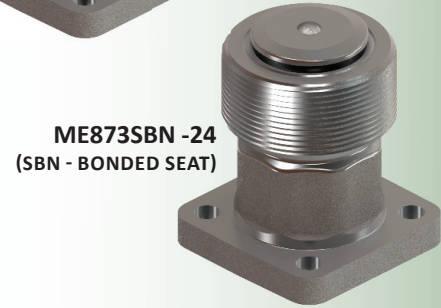
The ME873S Series valves feature our new modular Excelsior-Flange 4 bolt inlet flange design that can be easily adapted to both NPT thread or socket weld type B companion flanges ranging from 1-1/4" to 2" in diameter making it universal to piping sizes within this range. This innovative system allows installers the ability to eliminate unnecessary extra connections as well as possible leak points by integrating a convenient 4 bolt flange union at the valve inlet. Marshall Excelsior High Flow back check valves provide back flow protection to container openings or liquid lines where flow is intended for one direction. The valve is normally held closed until pressure activates the valve when flow is directed into piping or containers causing the back check to open. When flow stops or reverses, the check returns to the closed position. All MEC High Flow Back Check valves are supplied with o-ring soft seats, which can be removed for metal to metal seating. Also available with permanently bonded on main valve seals (SBN).

FEATURES:

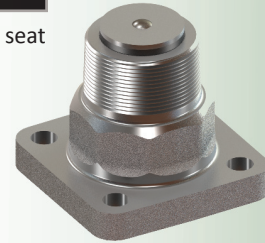
- Universal seat - Remove O-ring seal to create metal to metal seating surface or (SBN) bonded seat
- Up to **20% MORE FLOW** than nearest competitor
- Maximum product flow achieved by full port and stem travel design
- All models feature stainless steel stem, spring and valve guide
- Valve body: Ductile Iron / Shutoff poppet assy: steel & stainless steel
- Available in 2" NPT and 3" NPT x 4 Bolt Type A Flange
- All models can be used with LP Gas or NH₃
- Universal 4 bolt flange inlet type A



ME873S-24
SHOWN WITH O-RING



ME873SBN-24
(SBN - BONDED SEAT)



ME873S-16
SHOWN WITH O-RING REMOVED
METAL TO METAL

MEC Excelsior-Flange High Flow Back Check Valves

Part No.	Description	Material	Propane Flow 10 PSIG Pressure Differential
ME873S-16	Excelsior-Flange 2" MNPT x 4 Bolt Type A Flange Back Check Valve	Ductile	187
ME873SBN-16	Excelsior-Flange 2" MNPT x 4 Bolt Type A Flange Back Check Valve (SBN) Bonded Seat	Ductile	187
ME873S-24	Excelsior-Flange 3" MNPT x 4 Bolt Type A Flange Back Check Valve	Ductile	449
ME873SBN-24	Excelsior-Flange 3" MNPT x 4 Bolt Type A Flange Back Check Valve (SBN) Bonded Seat	Ductile	449
Accessories			
Part No.	Description		
ME842-10-107	1-1/4" FNPT Tapped 4 Bolt Type B Flat Face Flange Adapter		
ME842-12-107	1-1/4" Socket Weld 4 Bolt Type B Flat Face Flange Adapter		
ME842-16-107	1-1/2" FNPT Tapped 4 Bolt Type B Flat Face Flange Adapter		
ME843-10-107	1-1/2" Socket Weld 4 Bolt Type B Flat Face Flange Adapter		
ME843-12-107	2" FNPT Tapped 4 Bolt Type B Flat Face Flange Adapter		
ME843-16-107	2" Socket Weld 4 Bolt Type B Flat Face Flange Adapter		

Liquid Butane Capacity = Flow Rate x .94

Liquid Anhydrous Ammonia Capacity = Flow Rate x .90

Replacements o-rings available upon request