

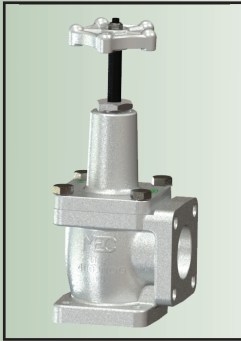
# MEC<sup>™</sup> Excelsior-Flange Series Full Flow Globe and Angle Valves

## DESCRIPTION

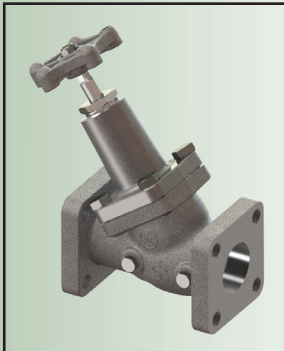
The ME813 and ME823 Series valves feature our new modular Excelsior-Flange 4 Bolt inlet/outlet design that can be easily adapted to both NPT thread or socket weld type A companion flanges (ME840 & ME841 Series) ranging from 1-1/4" to 2" in diameter making it universal to piping sizes within this range. This innovative system allows installers the ability to eliminate unnecessary connections as well as possible leak points by integrating a convenient 4 bolt flange union at the valve inlet/outlet connections.

## FEATURES

- All stainless steel internal components with rotating seat disc design & V-cup Teflon<sup>®</sup> packing stem seals
- Double lead acme stem thread ensures quick and efficient operation
- Durable ductile iron valve body with zinc plating finish
- 1-1/4" & larger globe valves have 35° seat angle for maximum product flow
- 1-1/4" & larger globe valve designed ergonomically correct for bobtail transport and bulk plant applications
- Rated for 400 WOG
- Operating temperature -40° to +212° Fahrenheit
- Up to **70% more flow** than the nearest competitor
- 1/4" FNPT or 1/2" FNPT plugged accessory ports upstream and downstream of valve seat
- Standard Nitrile seat, optional Teflon or Viton seat



ME813-16



ME823-10



ME819-16

### MEC Excelsior-Flange Single & Double Flange Full Flow Globe and Angle Valves

Angle	Globe	Description	Side Ports	Inlet	Outlet
ME813-10	ME823-10	1-1/4" 4 Bolt Double Flange Valve	1/4" FNPT	4 Bolt Flange Type B	4 Bolt Flange Type B
—	ME822-16	2" 4 Bolt Double Flange Valve	1/2" FNPT	4 Bolt Flange Type B	4 Bolt Flange Type B
ME813-16	ME823-16	2" 4 Bolt Double Flange Valve	1/4" FNPT	4 Bolt Flange Type B	4 Bolt Flange Type B
—	ME818-16	2" 4 Bolt Single Flange Valve	1/2" FNPT	4 Bolt Flange Type B	2" FNPT
—	ME819-10	1-1/4" 4 Bolt Single Flange Valve	1/4" FNPT	4 Bolt Flange Type B	1-1/4" FNPT
—	ME819-16	2" 4 Bolt Single Flange Valve	1/4" FNPT	4 Bolt Flange Type B	2" FNPT

### Accessories & Replacement Parts

Part No.	Description
MEH225	1/4" MNPT Hydrostatic Relief Valve 440 PSIG - 1-1/16" OAL - Brass
MEH225SS	1/4" MNPT Hydrostatic Relief Valve 440 PSIG - 1-1/16" OAL - Stainless Steel
MEH25/450	1/4" MNPT Hydrostatic Relief Valve 450 PSIG - 1-59/64" OAL - Brass
MEJ402S	1/4" MNPT Liquid Vent Valve w/ Tee Handle - Stainless Steel
ME829	Universal E-Z Turn Knob & Bolt Kit For Full Port Valves
ME815-10BRK	1-1/4" Angle & Globe Valve Complete Bonnet Assembly
ME815-10SRK	1-1/4" Angle & Valve Seal Replacement Kit
ME815-16BRK	2" Angle & Globe Valve Complete Bonnet Assembly
ME815-16SRK	2" Angle & Valve Seal Replacement Kit
ME815-10/16HRK	1-1/4", 1-1/2" & 2" Angle & Globe Valve Replacement Handle & Retaining Nut
ME840-10F	1-1/4" FNPT 4 Bolt Type A Flange Adapter Plate w/ Bolts & O-Ring
ME841-10F	1-1/4" Socket Weld 4 Bolt Type A Flange Adapter Plate w/ Bolts & O-Ring
ME840-12F	1-1/2" FNPT 4 Bolt Type A Flange Adapter Plate w/ Bolts & O-Ring
ME841-12F	1-1/2" Socket Weld 4 Bolt Type A Flange Adapter Plate w/ Bolts & O-Ring
ME840-16F	2" FNPT 4 Bolt Type A Flange Adapter Plate w/ Bolts & O-Ring
ME841-16F	2" Socket Weld 4 Bolt Type A Flange Adapter Plate w/ Bolts & O-Ring
MEP840-10	1-1/4" FNPT 4 Bolt Type A 90° Flange Adapter Elbow w/ Bolts & O-Ring
MEP841-10	1-1/4" Socket Weld 4 Bolt Type A 90° Flange Adapter Elbow w/ Bolts & O-Ring
MEP840-12	1-1/2" FNPT 4 Bolt Type A 90° Flange Adapter Elbow w/ Bolts & O-Ring
MEP841-12	1-1/2" Socket Weld 4 Bolt Type A 90° Flange Adapter Elbow w/ Bolts & O-Ring
MEP840-16	2" FNPT 4 Bolt Type A 90° Flange Adapter Elbow w/ Bolts & O-Ring
MEP841-16	2" Socket Weld 4 Bolt Type A 90° Flange Adapter Elbow w/ Bolts & O-Ring