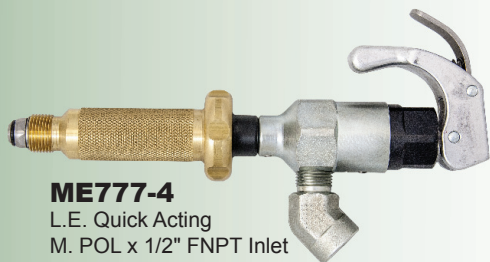
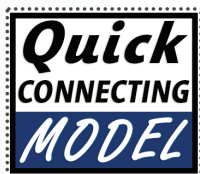


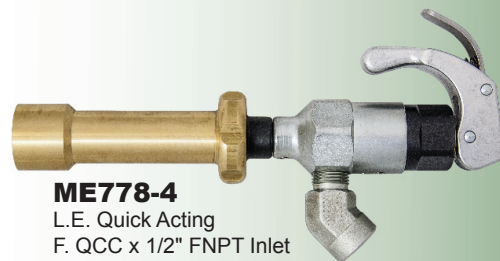
MEC HIGH FLOW Low Emission Quick Acting HOSE END VALVES



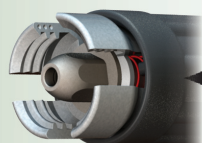
ME777-4
L.E. Quick Acting
M. POL x 1/2" FNPT Inlet



ME779N-4
L.E. Quick Connect Filler
F. QCC x 1/2" FNPT Inlet



ME778-4
L.E. Quick Acting
F. QCC x 1/2" FNPT Inlet



Jaws Open



PATENT
#9,010,814

**LESS THAN .04CC
LOSS AT DISCONNECT**



ME777
M. POL



ME778
F. QCC



ME779N
F. QCC Quick Connect Filler

APPLICATION:

These quick acting hose end valves are leading the industry in minimal product loss during disconnect without sacrificing flow. They have instant full-on flow with the added protection of a quick closing, self-locking handle to prevent accidental opening of the valve during handling or storage. They are designed to be used at the end of a filling hose on dispensing systems equipped for filling containers with QCC Type I OPD or F. POL type valves.

FEATURES:

- All stainless steel internal component construction
- Main valve seal molded then retained and captured for field repair-ability and maximum service life
- Vents less than .04 cc for minimal loss of product at disconnect
- Self-locking toggle handle prevents accidental valve opening
- Toggle handle and stem assembly rotate 360° for maximum ergonomic flexibility and comfort
- Available in Male POL and Female Type I / QCC fill connections
- Type I Female QCC features composite or heavy duty aluminum quick connect option for easy on/off and reduced repetitive motion

High Flow Low Emission Quick Acting Hose End Valves

Part No.	Description	Inlet	Outlet	Propane Flow @ 10 PSIG Pressure Differential	Propane Flow @ 30 PSIG Pressure Differential	Handle Style	Handle Material	Accessories
ME777-4	Male SN POL Filler Valve	1/2" FNPT	M. POL	5.2	10.4	Spin on	Brass	—
ME778-4	Female QCC (Type I) Filler Valve	1/2" FNPT	F. QCC	5.2	10.4	Spin on	Brass	—
ME779-4	Heavy Duty Female QCC (Type I) Quick Connect Filler Valve	1/2" FNPT	F. QCC	5.2	10.4	Quick Connect	Aluminum	—
ME779N-4	Female QCC (Type I) Quick Connect Filler Valve	1/2" FNPT	F. QCC	5.2	10.4	Quick Connect	Composite	—
ME777-6	Male SN POL Filler Valve	3/4" FNPT	M. POL	5.2	10.4	Spin on	Brass	ME850SS-6
ME778-6	Female QCC (Type I) Filler Valve	3/4" FNPT	F. QCC	5.2	10.4	Spin on	Brass	
ME779-6	Heavy Duty Female QCC (Type I) Quick Connect Filler Valve	3/4" FNPT	F. QCC	5.2	10.4	Quick Connect	Aluminum	
ME779N-6	Female QCC (Type I) Quick Connect Filler Valve	3/4" FNPT	F. QCC	5.2	10.4	Quick Connect	Composite	



For Your Local Marshall Excelsior Distributor Call 269-789-6700,
Fax 269-781-8340 or E-mail: sales@marshallexcelsior.com
www.marshallexcelsior.com



Made in the
U.S.A