

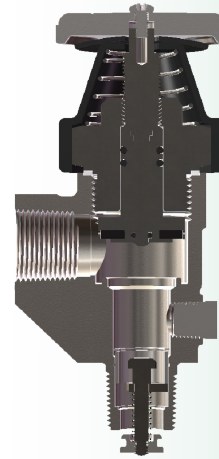


# Stainless Steel

# Liquid Transfer Valves w/ Excess Flow Option



**ME449EXSS/22**



### APPLICATION:

The ME449EXSS series stainless steel liquid transfer valve with integral excess flow is designed to provide safe means to transfer liquid or vapor from one storage container to another, or in liquid or vapor return applications. These valves can be equipped with an integral excess flow device for direct product transfer or without when used in conjunction with liquid withdrawal tank valves (ME462S/ME462SS). These valves feature a CF8M stainless steel body and all stainless steel internal components. Stainless steel construction enables use in a wide range of applications while offering maximum corrosion resistance for the life of the system. For use in both LPG & NH3 applications.

### SPECIFICATIONS:

- CF8M Grade stainless steel body
- All stainless steel internal components
- Weather boot protects stem and packing gland from weather and outside elements
- Convenient 1/4" Female NPT plugged auxiliary pressure port



Part No.	Container Connection	Outlet Connection	Auxiliary Port	Closing Flow GPM
ME449SS	3/4" MNPT	3/4" FNPT	1/4" FNPT for Gauge Mounting	N/A
ME449EXSS/22	3/4" MNPT	3/4" FNPT	1/4" FNPT for Gauge Mounting	22
ME449EXSS/28	3/4" MNPT	3/4" FNPT	1/4" FNPT for Gauge Mounting	28



For Your Local Marshall Excelsior Distributor Call 269-789-6700,  
Fax 269-781-8340 or E-mail: [sales@marshallexcelsior.com](mailto:sales@marshallexcelsior.com)  
[www.marshallexcelsior.com](http://www.marshallexcelsior.com)

