

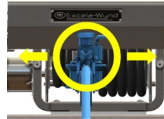


# ME9000LH-17/25 EXCELA-WYND™ HOSE REEL OPERATING INSTRUCTIONS



## BEFORE USING THE EXCELA-WYND™ HOSE REEL PLEASE READ THESE IMPORTANT SAFETY WARNINGS

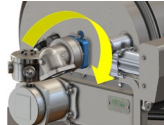
**WARNING!** Risk of injury from pinch points – Keep hands and fingers away from hose guide.



**WARNING!** Risk of injury from pinch points – Do Not operate hose reel without guards in place.



**WARNING!** Risk of injury from pinch / sever points – Keep fingers away from inlet flange.

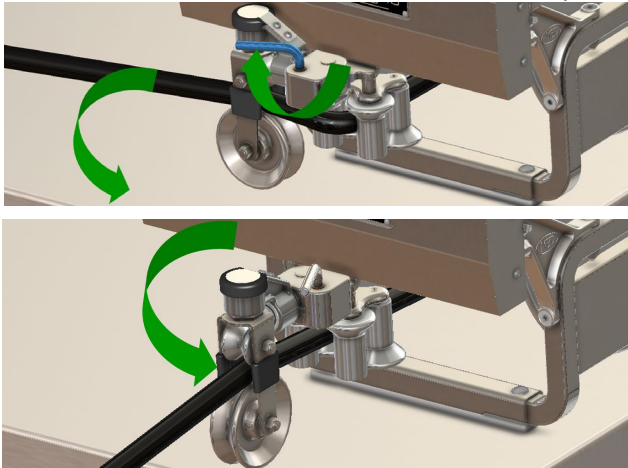


**WARNING!** This product contains a chemical known to the state of California to cause cancer and birth defects or reproductive harm.



## PULLING HOSE OUT with HANDS-FREE REEL OUT™

1. Pull the filler valve toward the front of the reel, release the latch and rotate the Gimbal until it locks in place.
2. Press and release the “REEL OUT” button on the PC3 or ASKW and keep remote with you.



**NOTE:** Reel brake is released and motor turns briefly to signal that Reel Out mode is active.

3. Walk the filler valve to the tank.

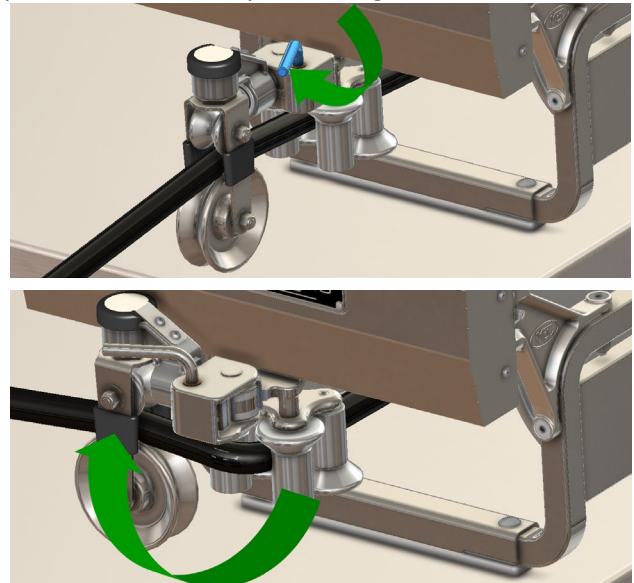
**Note:** As hose is pulled out, the motor drives the reel up to speed for one revolution. Slowing down, stopping or not pulling the hose for two minutes cancels Reel Out mode and turns reel braking on. Pressing the “Reel Out” button again releases reel braking, turns the motor briefly to signal that Reel Out is active and restarts the two minute timer.

## REWINDING HOSE

1. Press and hold the “REEL IN” button on the PC3 or ASKW remote and walk the filler valve back to the truck.
3. Release the latch, rotate the Gimbal until it locks in place and rewind any remaining hose onto the reel.



2. Release the “REEL IN” button when you reach the truck and stow the filler valve.





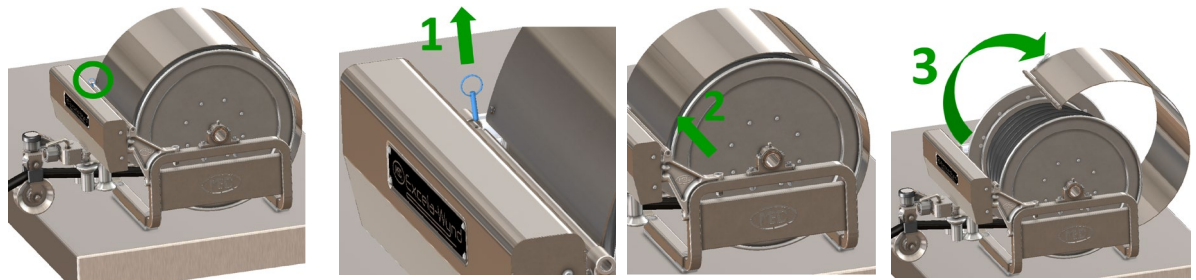
# ME9000LH-17/25 EXCELA-WYND™ HOSE REEL OPERATING INSTRUCTIONS



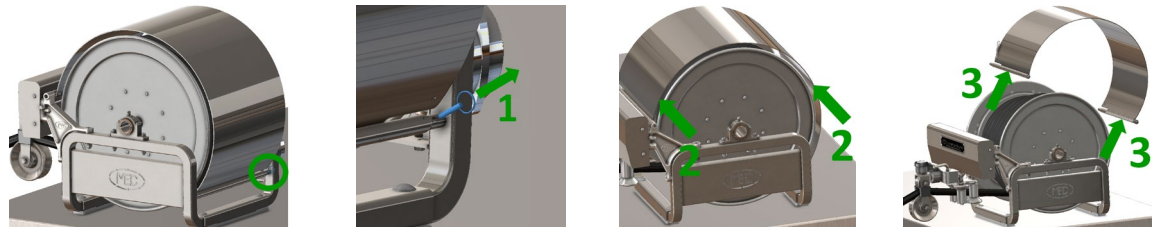
## TIPS for Operating the EXCELA-WYND™ Hose Reel

- Your service provider can adjust rewind speed between 1.5 and 3.5 MPH to match driver or seasonal needs.
- Avoid twisting the hose excessively to prevent binding on the reel and assure reliable automatic loading.
- If you have a loss of truck battery power to the reel controller while the hose is pulled out, such as when using the emergency shut down, when the power is restored the hose reel speed controller may temporarily rewind at a different speed. Once the hose is fully rewound on the reel, turning the truck ignition off and back on will reset rewind speed.

**To raise the cover -**  
Pull the front detent pin, push the front of the cover to the left to release it, and rotate it upward. Latch and pin cover when done.



**To remove the cover -**  
Pull both detent pins, push the cover to the left to release it, and lift it upward. Latch and pin cover when done.

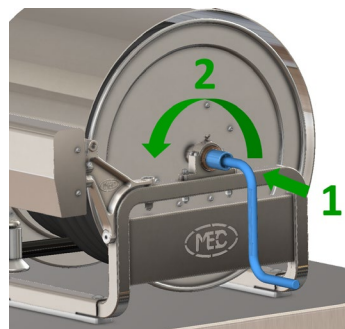


**To use the manual crank -** (Remove crank from storage pouch and remove red safety cap)

- 1) Insert the safety collar into the axle.
- 2) Push in and turn to engage drive pin.

When the hose is loaded, remove crank, replace safety cap and place in storage pouch.

**Note:** Turning the truck ignition off releases the reel brake making it easier to turn.



## TROUBLESHOOTING

PROBLEM	POSSIBLE CAUSES AND SOLUTIONS
<ul style="list-style-type: none"> <li>• The reel brake doesn't release when pressing <b>REEL OUT</b></li> <li>• The reel won't turn at all when pressing <b>REEL IN</b></li> <li>• The reel brake engages during <b>REEL OUT</b> or the reel stops rewinding during <b>REEL IN</b> once you're a distance from the truck</li> </ul>	<ul style="list-style-type: none"> <li>• The batteries in the remote may be too low to transmit or may transmit only a short distance - Recharge or replace batteries.</li> <li>• The truck ignition may be off, removing power from the controller - Make sure the ignition is on and the brake is set.</li> <li>• The circuit breaker on the BASE Engineering controller enclosure may have tripped - Check circuit breaker and reset, if tripped.</li> </ul>
<ul style="list-style-type: none"> <li>• The reel stops turning while pressing <b>REEL IN</b> (Rewind)</li> </ul>	<ul style="list-style-type: none"> <li>• An extremely high motor load may have triggered the over-current protection - It will automatically reset after (5) seconds.</li> <li>• The hose may be stuck on an obstruction - Check for and clear any obstructions.</li> <li>• The hose may have bound in the reel due to excessive twisting - If the hose is bound or not evenly layered on the reel, pull out any hose that is bound, remove excessive twist and rewind hose.</li> </ul>