



## ME815-24SRK SERIES SEAL REPAIR KIT FOR GLOBE & ANGLE VALVES

**!!!WARNING!!!**

READ AND UNDERSTAND ALL INSTRUCTIONS INCLUDED WITH THIS REPAIR KIT  
RELIEVE ALL PRESSURE FROM SYSTEM BEFORE REMOVING VALVE FOR SERVICE

**NOTE:** Numbers in brackets [ ] refer to the number in the valve component list.



**WARNING:** These products contain a chemical known to the state of California to cause cancer and birth defects or reproductive harm

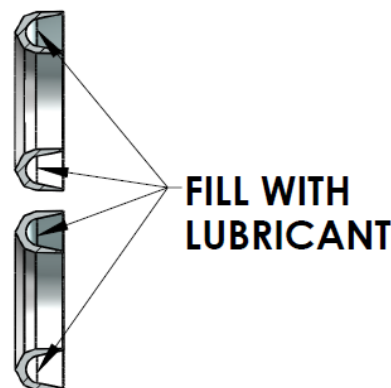
### A. Disassembly

1. **EVACUATE ALL PRESSURE FROM SYSTEM BEFORE ANY DISASSEMBLY OR REPAIR.**
2. Remove (4) Hex Screws [11] from Bonnet [2] and retain.
3. Remove Nameplate [12] and retain.
4. Remove Nylock Nut [6], Lock Washer [7], and Handwheel [8] from Stem [9a] and retain.
5. Remove Valve Shaft Gland [3a], Stem O-Ring [3b], (2) V-Packs [3c], Male Adapter Bushing [3d], Spring [4], and Nylon Gland Seal [5] from Bonnet [2]. Retain Valve Shaft Gland [3a] and Spring [4]. Discard all other parts in this step.
6. Remove Stem Assembly [9] from Bonnet [2] and retain.
7. Remove Wire Retaining Ring [9b], Set Screw [9c] from Valve Holder [9f] and retain.
8. Remove (14) Ball Bearings [9d] from Valve Holder [9f] and discard.
9. Remove Stem [9a] from Valve Holder Assembly [9f].
10. Remove Seat Gasket [9e], Retainer Screw [9j], Valve Retainer [9g], and Valve Gasket [9h] from Valve Holder [9f]. Discard Valve Gasket [9h]. Retain all other parts in this step.
11. Remove Bonnet Seal [10] from Body [1] and discard.
12. Inspect Body [1] and Bonnet [2] and clean if necessary. Be sure the interior is free of dirt, residue, and foreign particles.

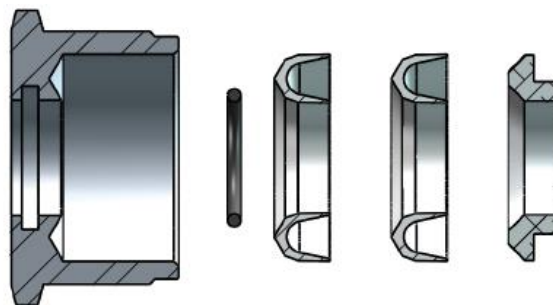
### B. Re-assembly

1. Install Valve Gasket [9h] and Valve Retainer [9g] into Valve Holder [9f].
2. Apply Loctite #271 (packet included) to Retainer Screw [9j] and install into Valve Holder.
3. Install Stem [9a] into Valve Holder [9f].
4. Install (14) Ball Bearings [9d] into Valve Holder [9f] to retain Stem [9a].

5. Install Set Screw [9c] into Valve Holder Assembly [9f] until it stops against Ball Bearings [9d], turn Set Screw [9c] back out ½ turn. Align groove in Set Screw [9c] with groove in Valve Holder Assembly [9f]. Valve Holder [9f] must spin freely.
6. Install Wire Retaining Ring [9b] into groove in Valve Holder [9f].
7. Install Stem Assembly [9] into Bonnet [2].
8. Install Spring [4] and Nylon Gland Seal [5] into Bonnet [2].
9. Apply Lubriplate or equivalent grease to Stem O-Ring [3b], Male Adapter Bushing [3d] and inside of Valve Shaft Gland [3a].
10. Apply Lubriplate or equivalent grease to outside of (2) V-Packs [3f]. Fill inside of components with lubricant as shown.



11. Install Stem O-Ring [3b], (2) V-Packs [3c] and Male Adapter Bushing [3d] into Valve Shaft Gland [3a] as shown.



12. Apply Loctite #565 or equivalent thread sealant to threads of Gland Seal Assembly [3] and install over

### Marshall Excelsior Company

1506 George Brown Drive Marshall, MI 49068

Phone (269) 789-6700 Fax (269) 781-8340

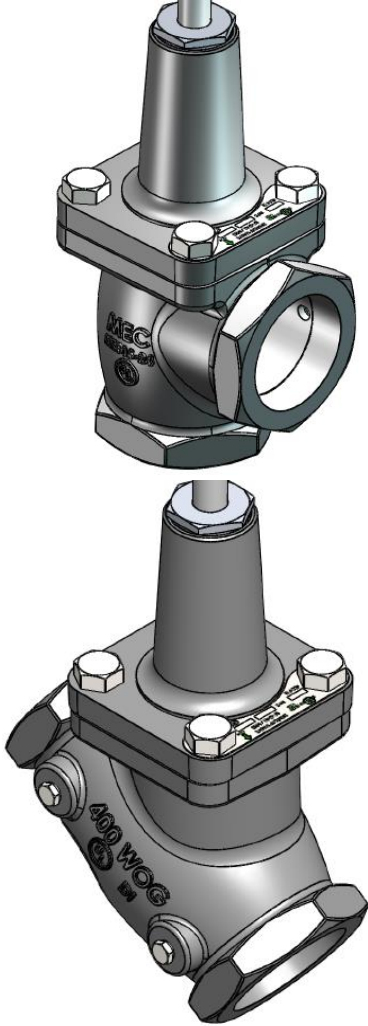
[www.marshallexcelsior.com](http://www.marshallexcelsior.com)

The contents of this publication are for informational purposes only. While every effort has been made to ensure accuracy, these contents are not to be construed as warranties or guarantees, expressed or implied, regarding the products or services described herein or for their use or applicability. Marshall Excelsior Co. reserves the right to modify or improve the designs or specifications of such products at any time without notice. The MEC™ logo is the trademark of Marshall Excelsior Co.

## ME815-24SRK

Stem Assembly [9] into Bonnet [2]. Wipe away excess lubricant.

13. Install Bonnet Seal [10] into Body [1].
14. Install Bonnet [2] onto Body [1].
15. Install Nameplate [12] onto Bonnet [2] as shown.



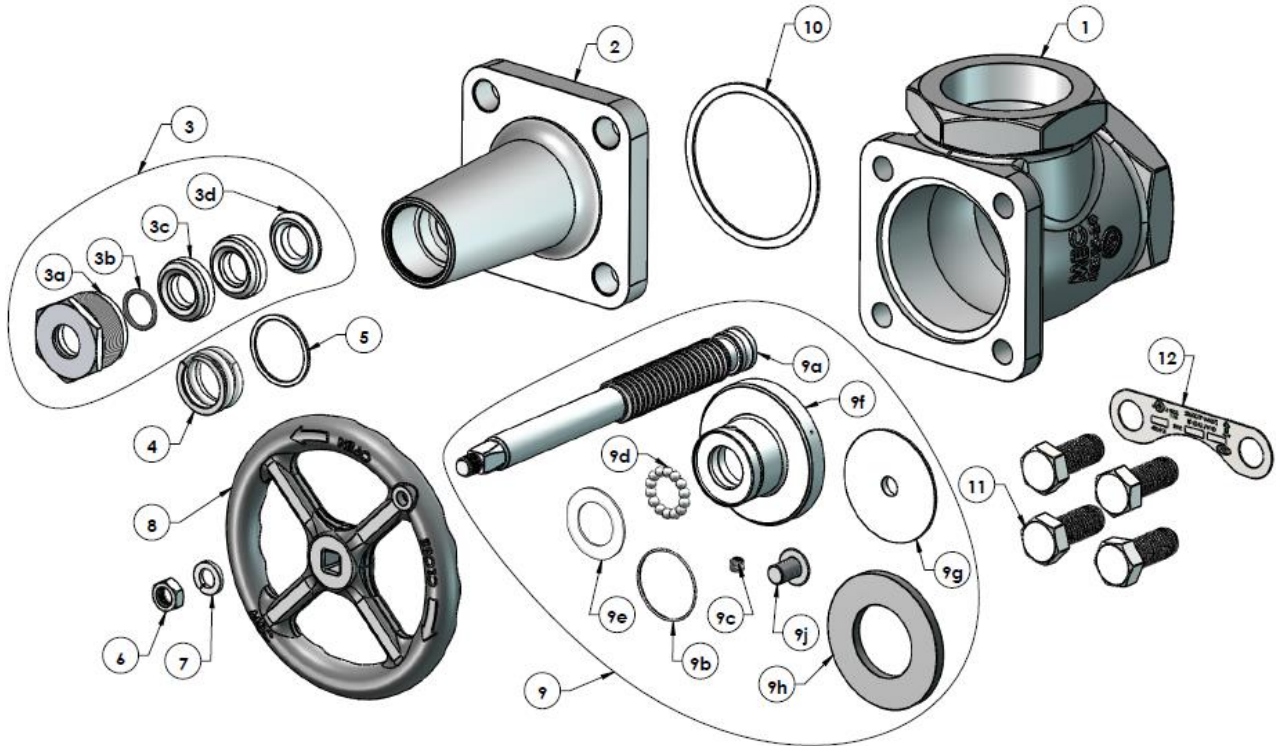
### C. Component List

1. Body, Globe or Angle
2. Bonnet
3. Gland Seal Assembly
  - 3a. Valve Shaft Gland
  - 3b. Stem O-Ring
  - 3c. V-Packs; Qty: 2
  - 3d. Male Adapter Bushing
4. Spring
5. Nylon Gland Seal
6. Nylock Nut
7. Lock Washer
8. Handwheel
9. Stem Assembly
  - 9a. Stem
  - 9b. Wire Retaining Ring
  - 9c. Set Screw
  - 9d. Ball Bearing; Qty: 14
  - 9e. Seat Gasket
  - 9f. Valve Holder
  - 9g. Valve Retainer
  - 9h. Valve Gasket
  - 9j. Retainer Screw
10. Bonnet Seal
11. Hex Screw; Qty: 4
12. Nameplate

16. Install (4) Hex Screws [11] onto Bonnet [2].
  17. Install Handwheel [8], Lock Washer [7], and Nylock Nut [6] onto Stem [9a]. Tighten Nylock Nut [6] to 55-65 IN-LBS torque.
  18. Connect the valve assembly outlet to a pressure source of at least 150 PSI. Check for leaks at all joints and at stem seal using a suitable leak detector solution such as "Marshall Excelsior" leak detector.
- CAUTION: DO NOT USE THE VALVE IF ANY JOINT CONTINUES TO LEAK UNDER PRESSURE.**

# ME815-24SRK

## ME815



## ME825

