

**ME815SRK SERIES
SEAL REPAIR KIT FOR GLOBE & ANGLE VALVES
FOR: ME815/ME825 1 1/4" THRU 2" NPT SIZES**

!!!WARNING!!!

READ AND UNDERSTAND ALL INSTRUCTIONS INCLUDED WITH THIS REPAIR KIT
RELIEVE ALL PRESSURE FROM SYSTEM BEFORE REMOVING VALVE FOR SERVICE

NOTE: Numbers in brackets [] refer to the number in the valve component list. Numbers in parenthesis () refer to quantity.



WARNING: These products contain a chemical known to the state of California to cause cancer and birth defects or reproductive harm

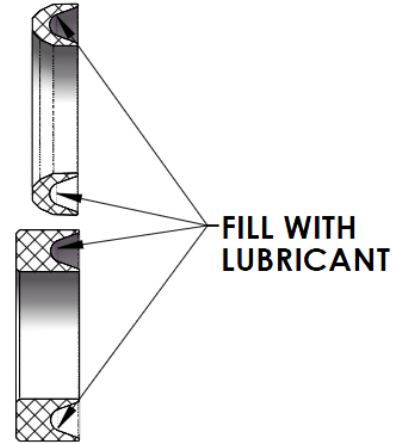
A. Disassembly

1. **EVACUATE ALL PRESSURE FROM SYSTEM BEFORE ANY DISASSEMBLY OR REPAIR.**
2. Remove (4) Hex Screws [14] from Bonnet [1] and retain.
3. Remove Nameplate [12] and retain.
4. **Pilot/IBC versions:** Remove Dataplate [13] and retain.
5. Remove Handle Nut [11], Lock Washer [10], and Handwheel [9] from Stem [3a] and retain.
6. Remove Gland Seal Assembly [6], Spring [5] and Nylon Gland Seal [4]. Discard all internal Gland Assembly components [6b-6f] and Nylon Gland Seal. Retain Valve Shaft Gland [3a] and Spring.
- NOTE: Removed Gland Assembly components may differ from Repair Kit.**
7. Remove Stem Assembly [3] from Bonnet [2] and retain.
8. Remove and retain Wire Retaining Ring [3f], Set Screw [3e], and (9) Ball Bearings [3d] from Valve Holder [3e].
9. Remove Stem [3a] from Valve Holder [3e]; Retain Stem, discard Valve Holder.
10. Remove Bonnet Seal [7] and Bonnet O-ring [8] from Body [1] and discard.
11. Inspect Body [1] and Bonnet [2] and clean if necessary. Be sure the interior is free of dirt, residue, and foreign particles.

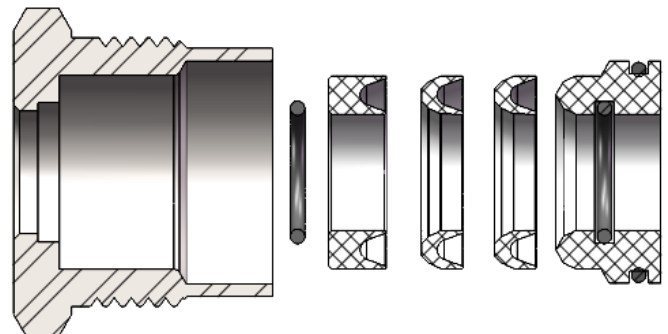
B. Re-assembly

1. **Pilot versions only:** Install Pilot O-ring [3c] into Valve Holder [3b]. O-ring is pre-lubricated.
2. Install Stem [3a] into Valve Holder [3b].
3. Install (9) Ball Bearings [3d] into Valve Holder [3b] to retain Stem [3a].
4. Install Set Screw [3e] into Valve Holder [3b] until it stops against Ball Bearings [3d], then back Set Screw out 1/2-turn. Align groove in Set Screw with groove in Valve Holder.
5. Ensure Valve Holder [3b] spins freely; install Retaining Ring [3f] into groove in Valve Holder and Set Screw [3e].
6. Install Stem Assembly [3] into Bonnet [2].
7. Install Nylon Gland Seal [4] and Spring [5] into Bonnet [2].

8. Apply Lubriplate or equivalent grease to (1) Stem O-Ring [6b], Male Adapter Bushing [6e], and inside of Valve Shaft Gland [6a].
9. Apply Lubriplate or equivalent grease to outside of Female Adapter [6c] and (2) V-Packs [6d]. Fill inside of components with lubricant as shown.



10. Install (1) Stem O-Ring [6b], Female Adapter [6c], (2) V-Packs [6d], Bushing O-Ring (cut) [6f] and Male Adapter Bushing [6e] into Valve Shaft Gland [6a] as shown.



11. Apply Loctite #565 or equivalent thread sealant to threads of Gland Seal Assembly [6] and install over Stem Assembly [3] into Bonnet [2]. Wipe away excess lubricant.
12. Install Bonnet Seal [7] and O-ring [8] into Body [1] according to the following:

For 1-1/4" {-10} valves only:

- a. Iron Threaded Valves: Install Bonnet Seal [7] only
- b. Iron Flanged Valves: Install both Bonnet Seal [7] and Bonnet O-ring [8b]
- c. All Stainless Valves: Install Bonnet O-ring [8c] only

Marshall Excelsior Company

1506 George Brown Drive Marshall, MI 49068
Phone (269) 789-6700 Fax (269) 781-8340
www.marshallexcelsior.com

ME815SRK

For 2" {-16} valves only:

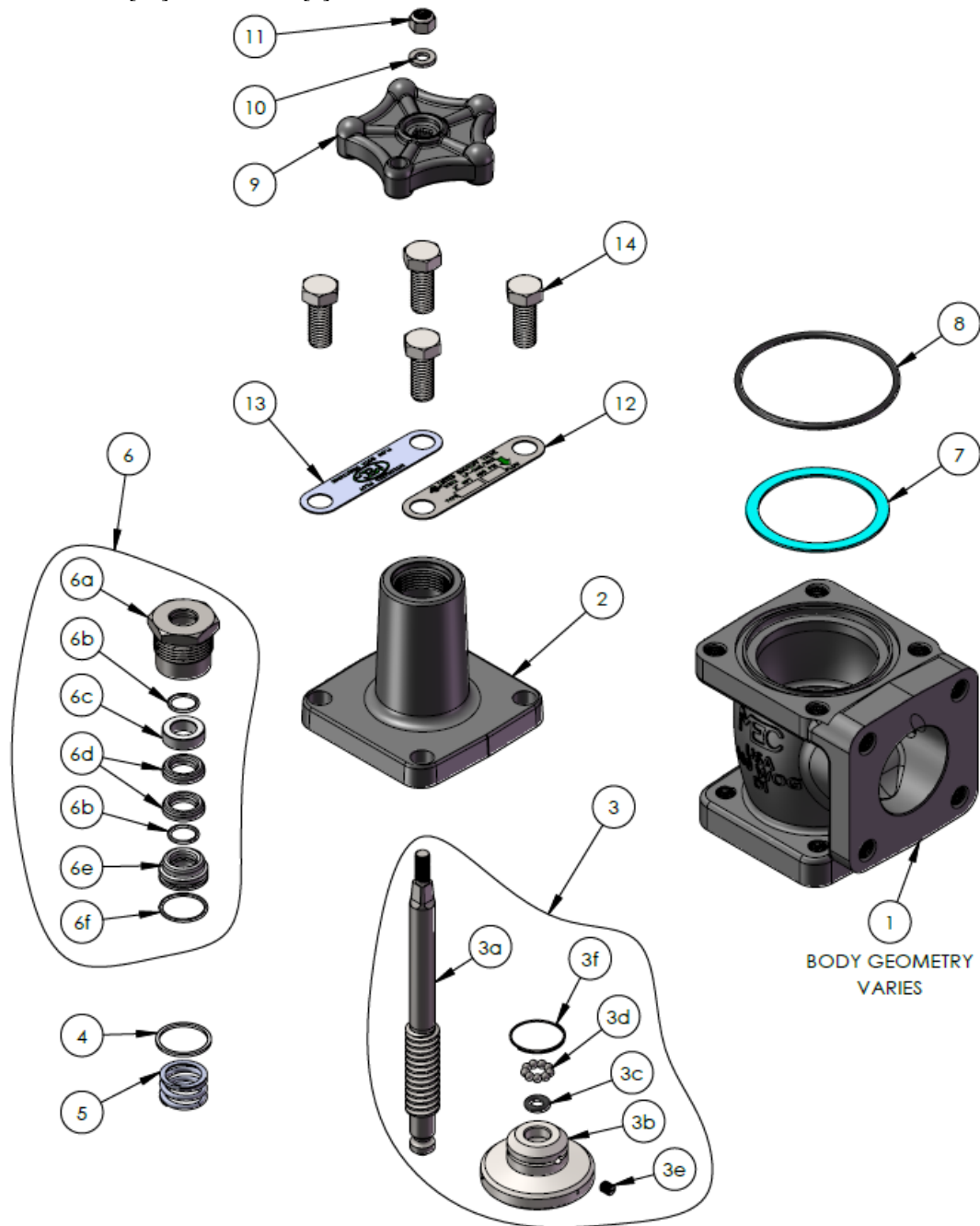
- a. Iron Threaded Valves: Install Bonnet Seal [7] only
- b. Iron Flanged Valves: Install both Bonnet Seal [7] and Bonnet O-ring [8a]
- c. All Stainless Valves: Install Bonnet O-ring [8a] only

Note: Ensure appropriate size O-ring [8a-8c] is installed per Table and 1:1 scale comparison below.

- 13. Install Bonnet [2] onto Body [1].
- 14. Install Nameplate [12] onto Bonnet [2] in location and orientation shown.
- 15. **For Pilot/IBC Versions:** Install Dataplate [13] onto Bonnet [2] aligned with remaining holes.
- 16. Install (4) Hex Screws [14] onto Bonnet [2].

- 17. Install Handwheel [9], Lock Washer [10], and Handle Nut [11] onto Stem [3a]. Tighten Handle Nut to 55-65 in-lb torque.
- 18. Connect the valve assembly outlet to a pressure source of at least 150 PSI. Check for leaks at all joints and at stem seal using a suitable leak detector solution such as "Marshall Excelsior" leak detector.

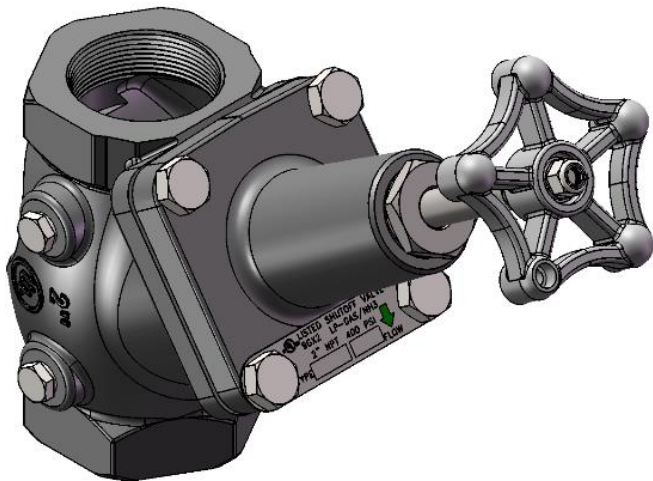
CAUTION
DO NOT USE THE VALVE IF ANY JOINT CONTINUES TO LEAK UNDER PRESSURE.



ME815SRK

C. Component List

Item #	Description	Qty	Included in Standard and IBC Kit	Included in Pilot Kit	For Threaded Iron valves (i.e. ME815)	For Flanged Iron valves (i.e. ME819)	For all Stainless valves (i.e. ME813SS)
1	Body (Globe, Angle, Threaded, Flanged)	1					
2	Bonnet	1					
3	Stem Assembly						
3a	Stem	1					
3b	Valve Holder	1	✓	✓	✓	✓	✓
3c	Pilot O-ring	1		✓	✓	✓	✓
3d	Ball Bearing	9					
3e	Set Screw	1					
3f	Retaining Ring	1					
4	Spring	1					
5	Nylon Gland Seal	1	✓	✓	✓	✓	✓
6	Gland Seal Assembly						
6a	Valve Shaft Gland	1					
6b	Stem O-ring	2	✓	✓	✓	✓	✓
6c	Female Adapter	1	✓	✓	✓	✓	✓
6d	V-Pack	2	✓	✓	✓	✓	✓
6e	Male Adapter Bushing	1	✓	✓	✓	✓	✓
6f	Bushing O-ring (cut)	1	✓	✓	✓	✓	✓
7	Bonnet Seal	1	✓	✓	✓	✓	
8	Bonnet O-ring						
8a	-16 Series O-ring	1	✓	✓		✓	✓
8b	Iron -10 O-ring	1	✓	✓		✓	
8c	Stainless -10 O-ring (yellow dot)	1					✓
9	Handwheel	1					
10	Lock Washer	1					
11	Handle Nut	1					
12	Nameplate	1					
13	Pilot/IBC Dataplate	1					
14	Hex Screw	4					



Globe Valve Nameplate Orientation



Angle Valve Nameplate Orientation

ME815SRK

