

### ME990-3F-PGA PACKING GLAND ASSEMBLY FOR: ME990 3" SINGLE FLANGED INTERNAL VALVES

**!!!WARNING!!!**

READ AND UNDERSTAND ALL INSTRUCTIONS INCLUDED WITH THIS REPAIR KIT  
RELIEVE ALL PRESSURE FROM SYSTEM BEFORE REMOVING VALVE FOR SERVICE

#### **!WARNING!**

Failure to follow these instructions or to properly install and maintain this equipment could result in an explosion and/or fire causing property damage and personal injury or death.

Install, operate and maintain Marshall Excelsior Co. equipment in accordance with federal, state, and local codes and these instructions. The installation in most states must also comply with NFPA No. 58, and ANSI Standard K61.1.

Only personnel trained in the proper procedures, codes, standards and regulations of the LP-Gas should install, maintain and service this equipment. Be sure all instructions are read and understood before installation, operation and maintenance. These instructions must be passed along to the end user of the product.



**WARNING:** These products contain a chemical known to the state of California to cause cancer and birth defects or other reproductive harm.

#### A. Disassembly

**NOTE:** Numbers in brackets [ ] refer to the number in the valve component list, See part C – Component List.

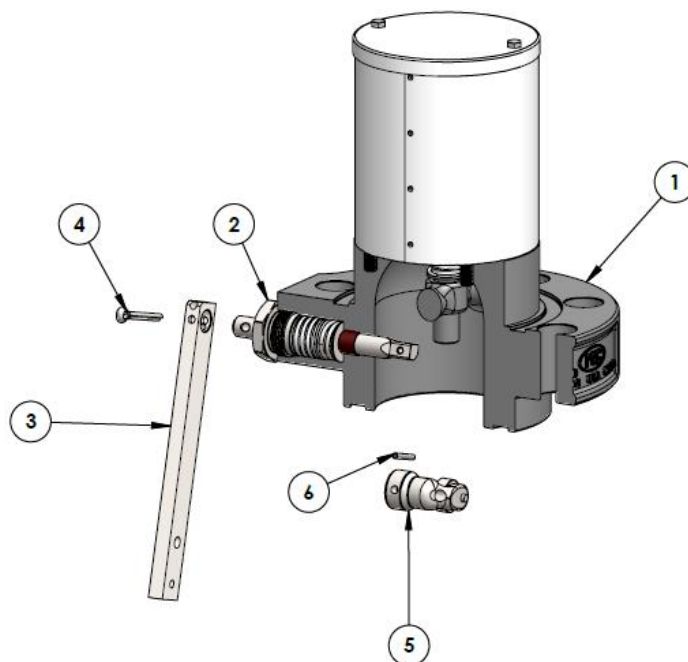
1. **EVACUATE ALL PRESSURE FROM SYSTEM BEFORE ANY DISASSEMBLY OR REPAIR.**
2. Remove Spring Pin [6] and CAM Assembly [5] from Gland Assembly [2] and discard.
3. Remove and retain Cotter Pin [4] and Lever [3].
4. Remove Gland Assembly [2] from Body [1] and discard.

#### B. Reassembly

1. Apply Loctite #242 or equivalent thread locker to threads of new Gland Assembly [2] and install into Body [1].
2. Connect the valve assembly outlet to a pressure source of at least 150 PSI. Check for leaks at all joints and stem seals using a suitable leak detector solution such as "Marshall Excelsior" leak detector.  
**CAUTION: DO NOT USE THE VALVE IF ANY JOINT CONTINUES TO LEAK UNDER PRESSURE**
3. Install Lever [3] and Cotter Pin [4] on Gland Assembly [2].
4. Install new CAM Assembly [5] and Spring Pin [6] onto Gland Assembly [2].

#### C. Component List

Item No.	Description	Qty	ME990-3F-PGA
1	Body	1	
2	Gland Assembly	1	✓
3	Lever	1	
4	Cotter Pin	1	
5	CAM Assembly	1	✓
6	Spring Pin	1	✓



#### Marshall Excelsior Company

1506 George Brown Drive Marshall, MI 49068  
Phone (269) 789-6700 Fax (269) 781-8340  
www.marshallexcelsior.com

The contents of this publication are for informational purposes only. While every effort has been made to ensure accuracy, these contents are not to be construed as warranties or guarantees, expressed or implied, regarding the products or services described herein or for their use or applicability. Marshall Excelsior Co. reserves the right to modify or improve the designs or specifications of such products at any time without notice. The MEC™ logo is the trademark of Marshall Excelsior Co.