

ME990-3F-VRK
COMPLETE VALVE REPAIR KIT
FOR: ME990-3F 3" SINGLE FLANGE
INTERNAL VALVE

!!!WARNING!!!
READ AND UNDERSTAND ALL INSTRUCTIONS INCLUDED WITH THIS REPAIR KIT
RELIEVE ALL PRESSURE FROM SYSTEM BEFORE REMOVING VALVE FOR SERVICE

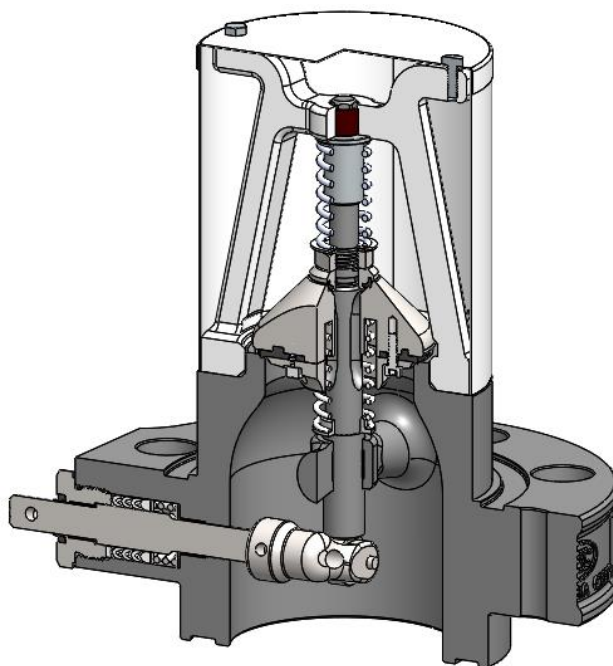
NOTE: Numbers in brackets [] refer to the number in the valve component list.



WARNING: These products contain a chemical known to the state of California to cause cancer and birth defects or reproductive harm

A. Disassembly

1. **EVACUATE ALL PRESSURE FROM SYSTEM BEFORE ANY DISASSEMBLY OR REPAIR.**
2. Remove (8) Bushings [19] from Valve Body [1] and discard (not shown).
3. Remove (2) Cap Screws [2] from Screen Cap [3] and discard.
4. Remove Screen Cap [3] and Screen [4]; retain components.
5. Remove (4) Cage Screws [5] from Valve Cage [6] and discard.
6. Remove Valve Cage [6] and Cage Bushing [7] and discard.
7. Remove Spring Guide [8], Closing Spring [9] and Spring Washer [10] and discard.
8. Remove Lock Nut [11] and Bleed Disc [12] and discard.
9. Remove Valve Poppet [13] and discard.
10. Remove Excess Flow Spring [14] and retain.
11. Remove Spring Seat [15] and Stem [16] and discard.
12. Remove Guide Bearing [17] and discard.
13. Remove Cam Pin [19] and Cam [20] from Gland Assembly [18] and discard.
14. Remove Gland Assembly [18] and discard.
15. Inspect Valve Body [1] and clean if necessary, be sure interior is free of dirt, residue and foreign particles.



B. Reassembly

1. Apply Loctite #242 or equivalent thread locker to gland threads of Body [1]; install new Gland Assembly [18]; see recommended orientation below.
2. Install new Cam [20] and new Cam Pin [19] onto Gland Assembly [18].
3. Install new Guide Bushing [17] into Body [1]
4. Install new Spring Seat [15], retained Ex-Flow Spring [14], and new Valve Poppet [13] onto new Stem [16] in order and orientation shown.
5. Install new Bleed Disc [12] and new Lock Nut [11] onto Stem [16].
6. Install Stem Assembly [11-16] into Body [1].

Marshall Excelsior Company

1506 George Brown Drive Marshall, MI 49068
Phone (269) 789-6700 Fax (269) 781-8340
www.marshallexcelsior.com

The contents of this publication are for informational purposes only. While every effort has been made to ensure accuracy, these contents are not to be construed as warranties or guarantees, expressed or implied, regarding the products or services described herein or for their use or applicability. Marshall Excelsior Co. reserves the right to modify or improve the designs or specifications of such products at any time without notice. The MEC™ logo is the trademark of Marshall Excelsior Co.

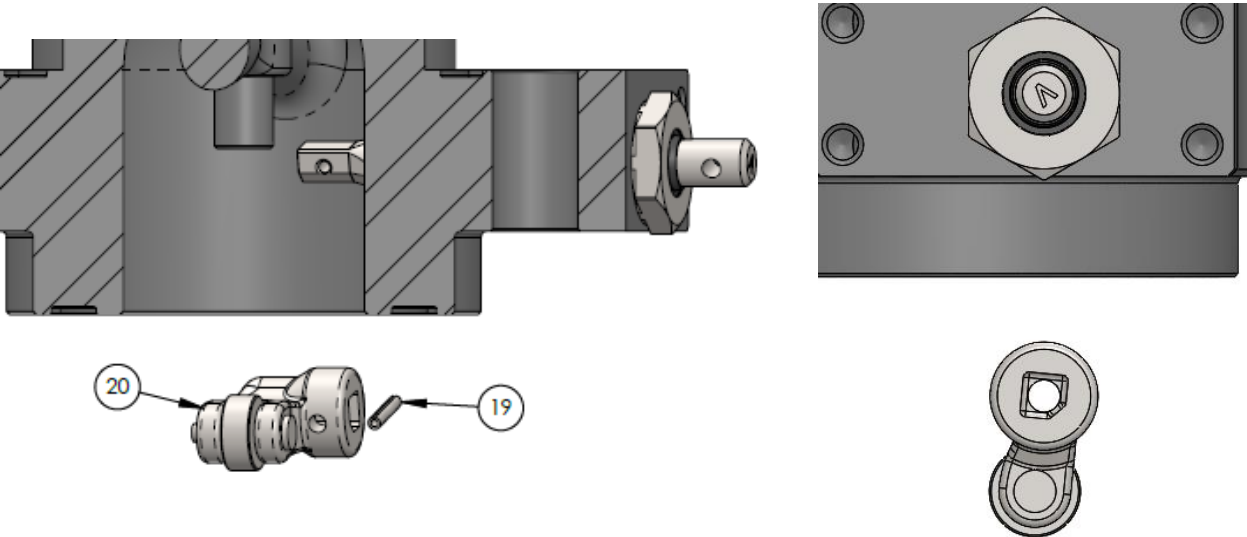
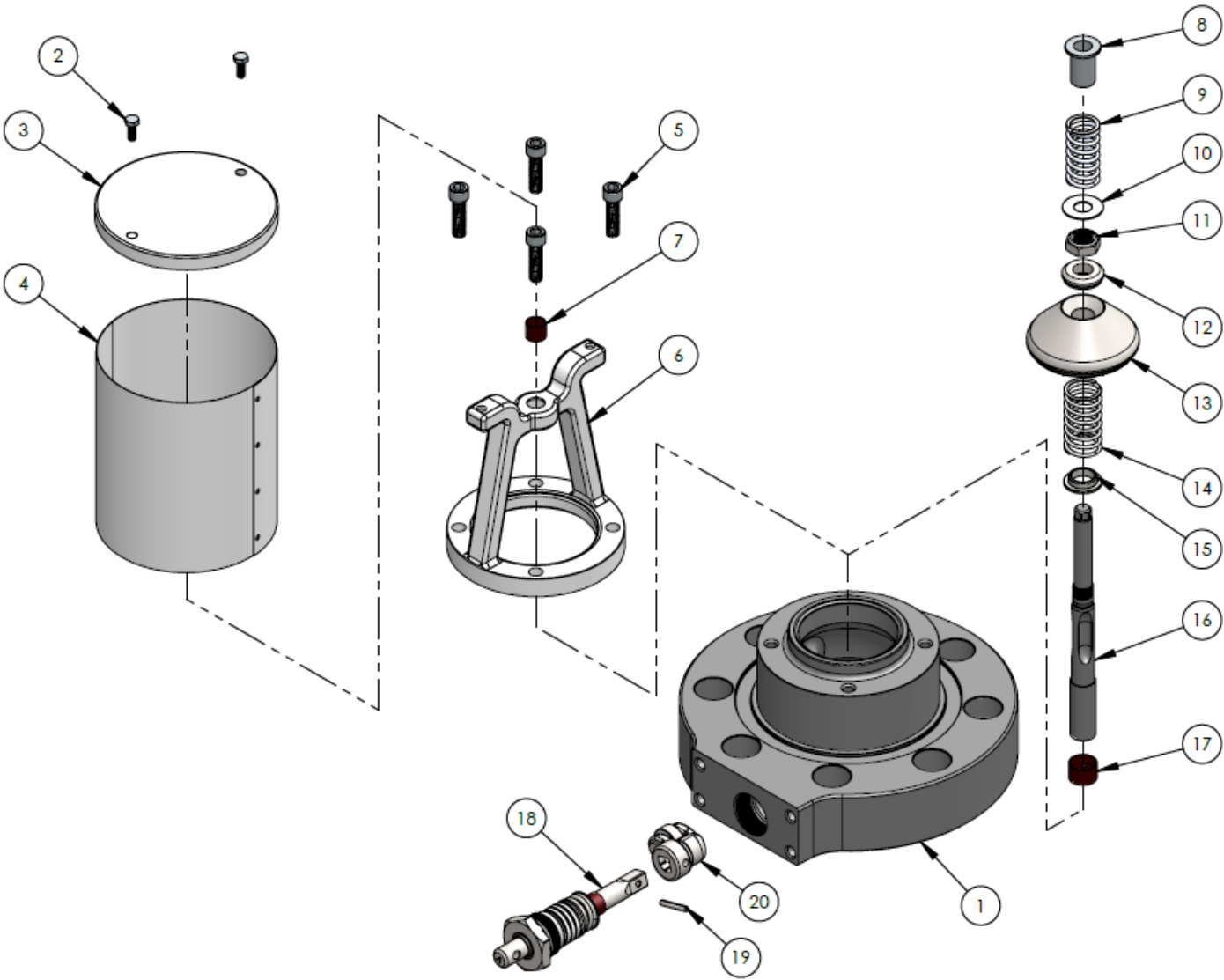
7. Install new Spring Washer [10] and new Closing Spring [9] onto Stem [16]
8. Install new Spring Guide [8] onto Stem [16] in orientation shown.
9. Install new Cage Bearing [7] into new Valve Cage [6]
10. Apply Loctite #242 or equivalent thread locker to (4) cage-screw threads of Body [1]; install new Valve Cage [6] onto Body, install (4) new Cage Screws [5] to retain.
11. Install Screen [4] and Screen Cap [3] onto Valve Cage [6]; install (2) new Cage Screws [2] to retain.
12. Connect the valve assembly outlet to a pressure source of at least 150 PSI. Check for leaks at all joints and stem seals using a suitable leak detector solution such as "Marshall Excelsior" leak detector.

**CAUTION: DO NOT USE THE VALVE
IF ANY JOINT CONTINUES TO LEAK
UNDER PRESSURE**

C. Component List

Item no.	Description	Qty	Included in Kit
1	Body	1	N
2	Cap Screw	2	Y
3	Screen Cap	1	N
4	Screen	1	N
5	Cage Screw	4	Y
6	Valve Cage	1	Y
7	Cage Bushing	1	Y
8	Spring Guide	1	Y
9	Closing Spring	1	Y
10	Spring Washer	1	Y
11	Lock Nut	1	Y
12	Bleed Disc	1	Y
13	Valve Poppet	1	Y
14	Excess Flow Spring	1	N
15	Spring Seat	1	Y
16	Valve Stem	1	Y
17	Guide Bearing	1	Y
18	Gland Assembly	1	Y
19	Cam Pin	1	Y
20	Cam	1	Y
21	Bushings (Not shown)	8	Y

ME990-3F-VRK



Recommended orientation for install