



EXCELA-WYND™ HOSE REEL



THIS IS WHAT INNOVATION LOOKS LIKE

The new ME9000 Series Excelsa-Wynd Hose Reel provides increased delivery efficiency and safety while reducing down time, comp claim injuries and driver fatigue. Other advantages include:

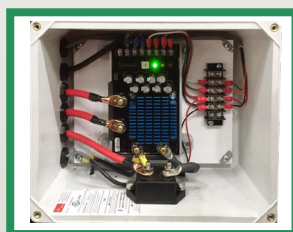
- Auto-wind hose return system
- Variable Speed Controller - maintains consistent walking speed
- Adjustable speed to suit driver preference or seasonal conditions
- Auto-push feature takes the starting hose pull effort off the driver
- Premium construction & materials for increased service life and minimal downtime
- Gimbal roller assembly significantly reduces pulling effort, even on hard 90° side pulls
- Internal gear drive eliminates chain
- Designed for minimal maintenance & ease of serviceability
- Integrated design makes your truck look great!



ME9000LH-17/25

Excelsa-Wynd™ Hose Reel with LH Type "D" **Excelsa-Flange™** Inlet

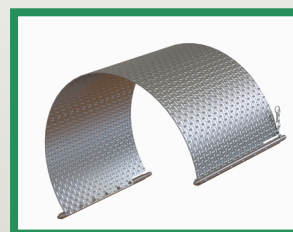
- 17" W x 25" dia. spool
- Holds up to 150' - 1" hose



VSC9000

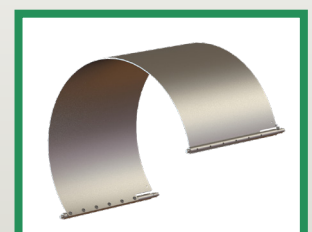
MEC/BASE Engineering Variable Speed Control System

*Included with hose reel purchase - see included voucher



ME9000WSDA

Weather Shield (sold separately)
Diamond Plate Aluminum
Bright Polished Finish

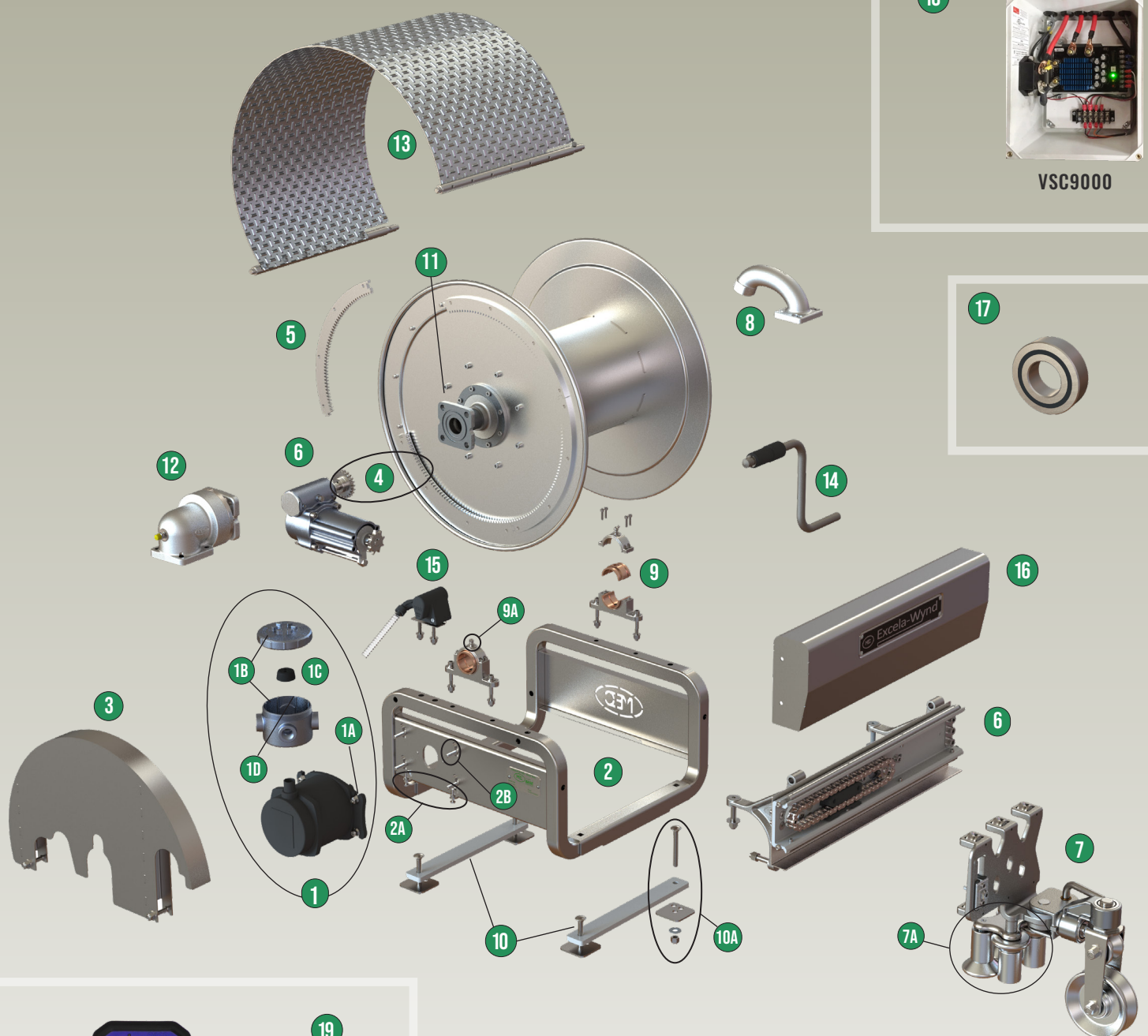


ME9000WSSA

Weather Shield (sold separately)
Smooth Aluminum
Silver Powder Coat Finish

A LOOK INSIDE

FEATURES AND BENEFITS

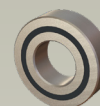


18



VSC9000

17



8



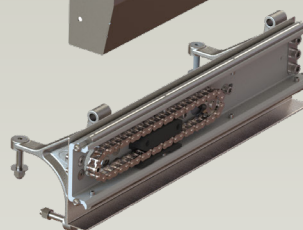
14



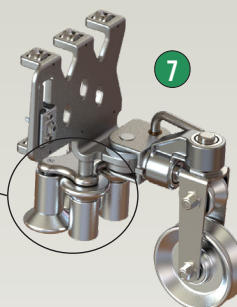
16



6



7



7A

* Patents pending



PC3



ASK

19

SETTING THE NEW

- 1 PRE-PAINTED MOTOR & JUNCTION BOX ASSEMBLY**
 - 1A MOTOR**
 - Explosion Proof; 500 RPM
 - Stainless steel shaft
 - 1B EXPLOSION PROOF JUNCTION BOX**
 - QPS Certified
 - 1C JUNCTION BOX WIRE SEAL BOOT**
 - 1D MEC HIGH CAPACITY WIRING CHAMBER**
 - 50% more volume
- 2 FORMED STAINLESS TUBE FRAME**
 - 2A MOTOR GEAR MESH ADJUSTMENT**
 - 2B SPRING LOADED MOTOR MOUNT**
 - Allows easy motor installation and replacement
- 3 QUICK ACCESS GEAR GUARD**
- 4 INTERNAL GEAR DRIVE SYSTEM**
 - Replaces traditional chain drive
- 5 QUICK CHANGE GEAR SEGMENTS**
- 6 AUTO-WIND CARRIAGE SYSTEM**
 - Heavy duty stainless construction
- 7 180° GIMBAL MOUNT SWIVEL SYSTEM**
 - Features quick deploy guide arm
 - Significantly reduces pulling effort
- 7A INBOARD GUIDE ROLLER SET**
 - Ensures smooth hose management
- 8 EASY HANG GOOSE NECK HOSE MOUNT**
- 9 EASY SERVICE MAIN SPOOL SPLIT BEARINGS**
- 9A MAIN SPOOL BEARING GREASE ZIRKS**

- 10 FRAME MOUNT DECK ISOLATION PADS**
 - 10A MOUNTING HARDWARE / BACKING PLATES**
 - Heavy duty stainless steel
- 11 EXCELA-FLANGE™ HOSE REEL INLET MOUNT**
 - Type "D" flange type
- 12 EXCELA-FLANGE™ SWIVEL (ME854SSH-4B-4B)**
 - Heavy duty; 90 degree 4-bolt flange (2)
 - Stainless construction
 - MEH225SS 1/4" hydrostatic relief pre-installed
- 13 EASY ACCESS WEATHER SHIELD (OPTIONAL)**
 - Aluminum construction
 - Smooth powder coat or polished diamond plate finish
- 14 SELF-EJECTING MANUAL CRANK HANDLE**
 - Provided with convenient storage bag
- 15 SMART SENSOR TECHNOLOGY**
 - 30 ft sensor extension cable included
- 16 EASY ACCESS AUTO-WIND COVER**
 - Stainless steel
- 17 SERVICE FREE SEALED STAINLESS BEARINGS**
 - Qty: 44 throughout assembly
 - Reduces resistance due to friction
- 18 EXCELA-WYND VARIABLE SPEED CONTROL**

Features: Soft start/stop

Auto Payout Control

Speed Control Safety Stop/Reset

*included with hose reel purchase - see enclosed voucher

SETTING REWIND SPEED (FACTORY SETTING IS 5)									
POT. SETTING	0	1	2	3	4	5	6	7	
HOSE SPEED (MPH)	1.5	1.8	2.1	2.4	2.6	2.9	3.2	3.5	

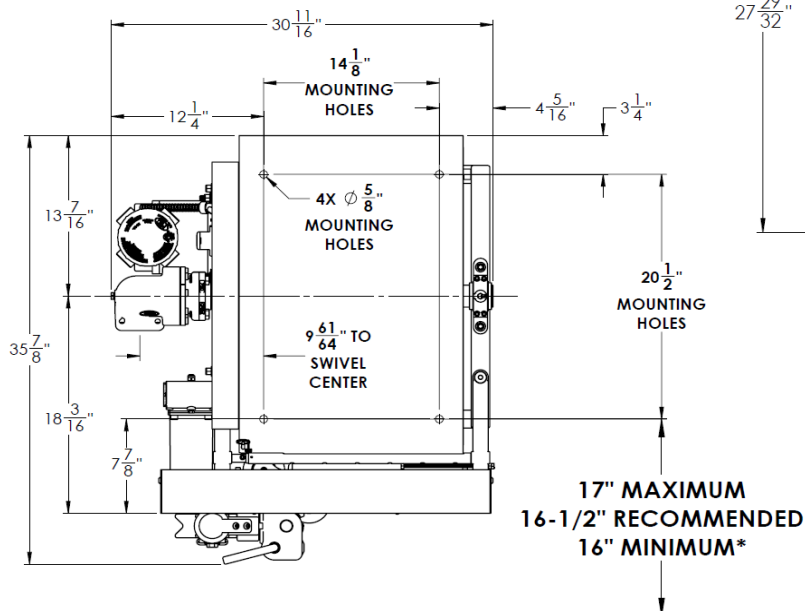
USE SCREW DRIVER TO TURN POT. SO ARROW POINTS TO DESIRED SPEED

- 19 BASE ENGINEERING PC3/ASK REMOTE CONTROL FUNCTIONALITY**
 - Sold separately

INDUSTRY STANDARD

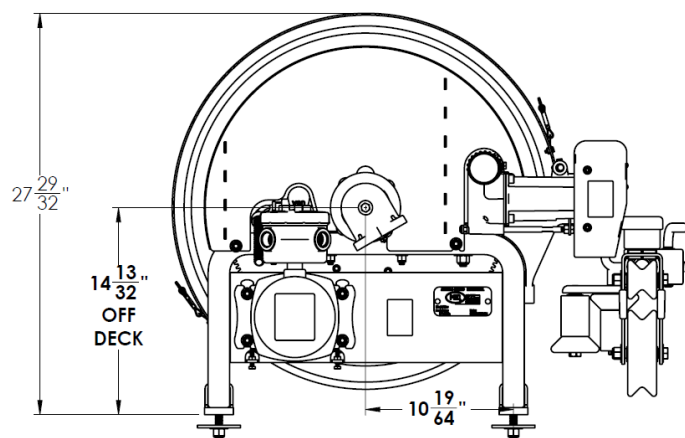
PRODUCT DIMENSIONS

Deck position and mounting specs



REAR SURFACE OF BUMPER
(DOT CRASH PROTECTION PLANE)

*FOR COMPLIANCE WITH TITLE 49CFR, SECTION 178.345-8 (D) ACCIDENT
DAMAGE PROTECTION REQUIREMENT (DOT 6" CRASH PROTECTION)



MORE INFORMATION

Scan codes below for more tools and references



IOM

Installation and Operating Instructions



ROI CALCULATOR

MEC Excelsior Payback /
Savings Calculator



OPERATION OVERVIEW VIDEO



QUICK START OPERATING GUIDE

Hose Reel Operating Instructions



WARRANTY INFO

Three year all inclusive,
no hassle warranty