



with the POWER of
BASE
 ENGINEERING INC.



ALLOWING THE TRUCKS OF *TOMORROW*
 TO BE BUILT TODAY !

Accu-Max+ Digital Dial

Features:

- Tilt compensation for maximum accuracy on all grades
- Estimated gallon (liter) display
- Bright, easy to read positive LCD display
- 10 selectable LCD backlight color options
- Sealed easy access connection
- Fully programmable with **Accu-Max+™** configuration kit
- Reverse compatibility to all MEC **Accu-Max™** Series DOT float gauges
- Ability to push display information to PC3 handheld remote

compatible with the
**BASE Engineering ProControl3
 Universal Remote**



Testing & Certifications:



Listed - Class I / Div. I



IP67 Rating / Full Submersion (1.0 meters)
 IEC/60529-IP6X Dust Ingress Protection

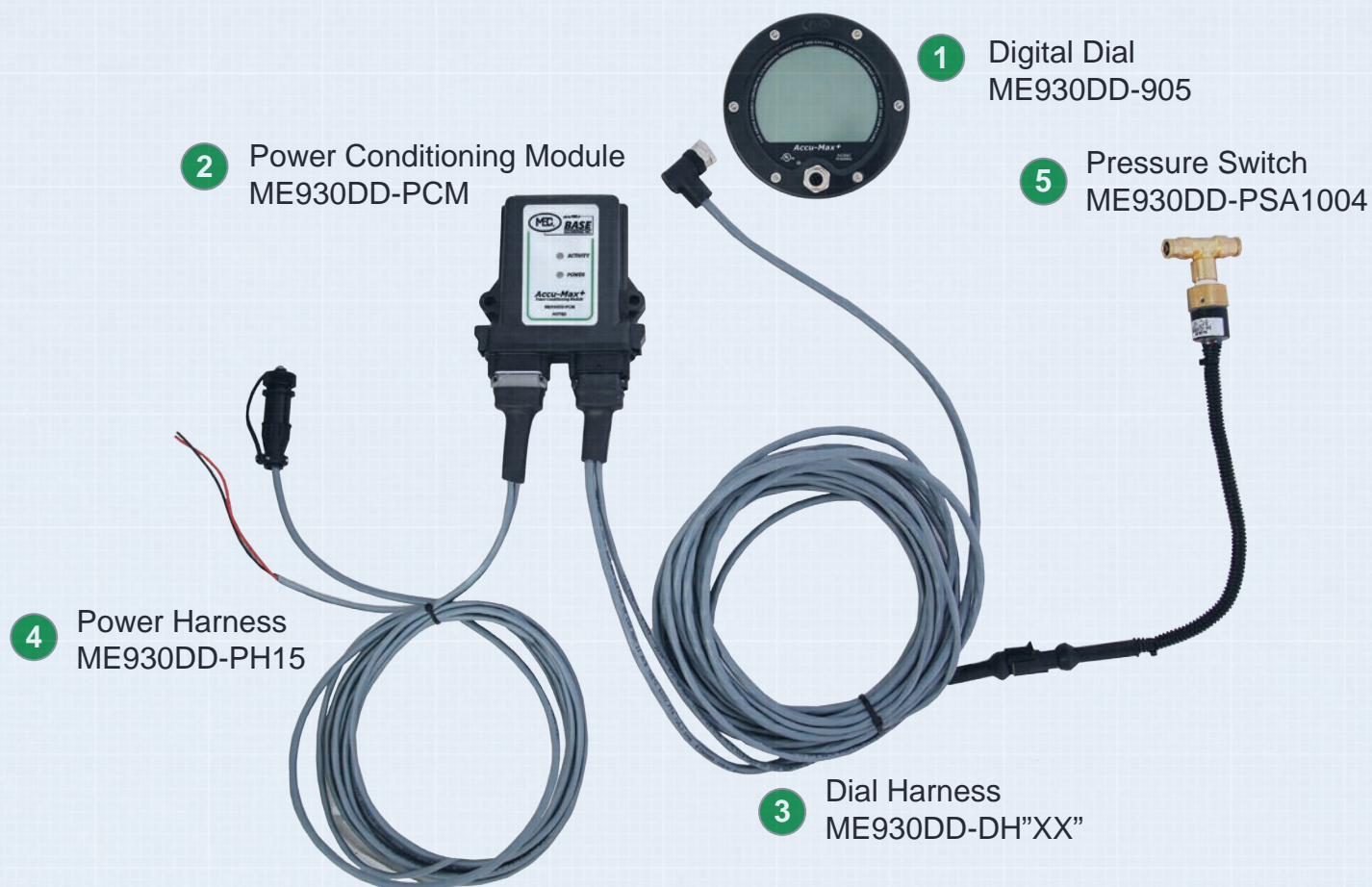


Certified - Intrinsically Safe PCM
 Class I / Zone I

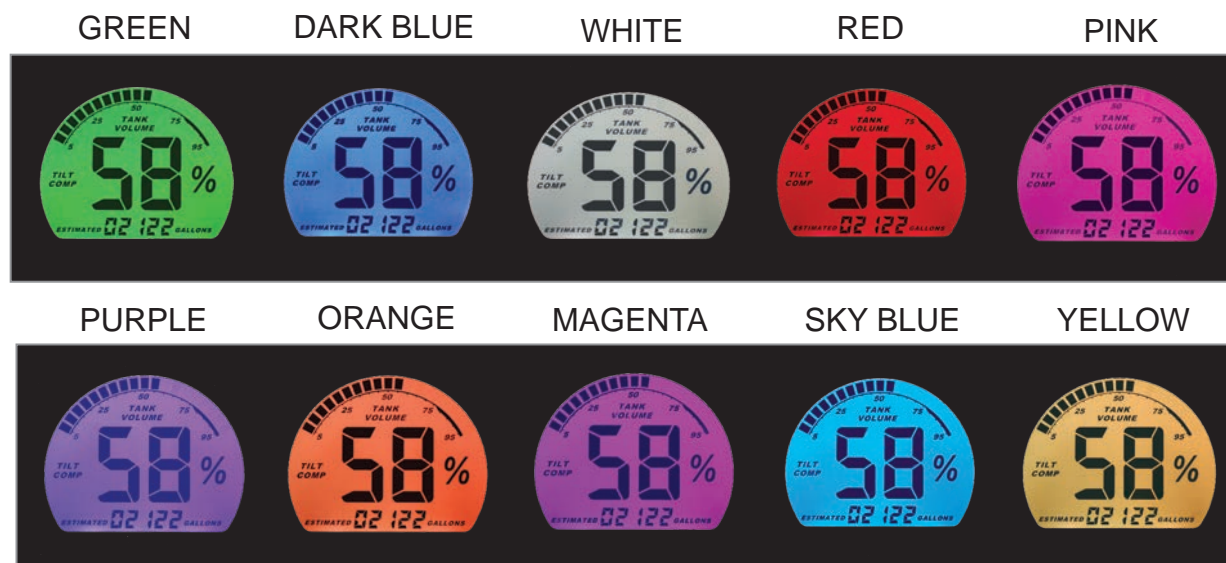


MIL-STD-810G/514.7 Vibration Testing

Accu-Max⁺ SYSTEM COMPONENTS



Backlight Color Options



innovation made simple

Customize Your Digital Dial

1

DIGITAL DIAL OPTIONS				
Part No.	Type	Style	Dial Size	Tank Diameter
ME930DD-905	DOT	Accu-Max+ Digital Dial Only	4"	N/A
ME930DD-72	DOT	Float Gauge w/ Accu-Max+ Digital Dial	4"	72"
ME930DD-79	DOT		4"	79"
ME930DD-84	DOT		4"	84"

* Custom length tank configurations available upon request for 30" to 300" I.D. tank

2

POWER CONDITIONING MODULE		
Part No.	Type	Mounting Location
ME930DD-PCM	Potted	Universal - Interior/Exterior

3

DIAL HARNESS		
Part No.	Description	Harness Length
ME930DD-DH20	Dial harness w/ 15 ft. air pressure switch cable	20'
ME930DD-DH30		30'
ME930DD-DH40		40'
ME930DD-DH50		50'

4

POWER HARNESS	
Part No.	Description
ME930DD-PH15	15 ft. vehicle power harness w/ 3 ft. data connector cable

5

PRESSURE SWITCH	
Part No.	Description
ME930DD-PSA1004	Air pressure switch assembly w/ 3/8" inline connector tee

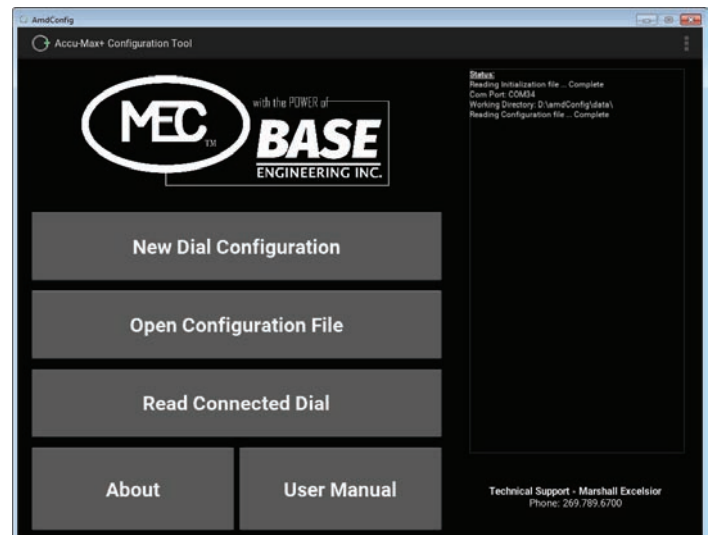
Accu-Max+ Configuration Kit

The **Accu-Max+** configuration kit is used to program the digital dial with tank parameters and settings for each tank. The included configuration program steps the user through the parameters and options available for the **Accu-Max+** Digital Dial.



ACCU-MAX+ CONFIGURATION KIT	
Part No.	Description
ME930DD-CK	PC executable file, programming cables, rechargeable lithium ion battery pack

* Kit includes all items shown



Application:

Measure liquid levels within horizontal DOT and Stationary ASME Tanks with fluid capacities above 2,300 gallons. Suitable for use in bobtail, transport and bulk storage applications.



ME930DD-72

DIGITAL DIAL OPTIONS

Part No.	Type	Style	Dial Size	Tank Diameter
ME930DD-72	DOT	Float Gauge w/ Accu-Max+ Digital Dial	4"	72"
ME930DD-79	DOT		4"	79"
ME930DD-84	DOT		4"	84"

* Custom length tank configurations available upon request for 30" to 300" I.D. tank

Accu-Max+ Float Gauges

Features:

- All stainless steel construction for use with LPG & NH3 applications
- Welded tube to coupling design for maximum strength and durability
- Integral spring loaded shock absorber
- Factory set and precision tuned for superb accuracy
- Dial face and mounting hardware universal with other industry standard gauges
- Mounts to all standard 8 bolt tank flange adapters
- Custom configurations available upon request

MOUNTING FLANGES

Part No.	Connection	Connection	Installation Tool
ME931	2-1/2" MNPT	1/2"-13 Female	MEP930WG
ME932	Weld	1/2"-13 Female	-

* Weld flanges supplied with material certification

ME931



ME932



Made in USA & Canada

