

**!!!WARNING!!!**

READ AND UNDERSTAND ALL INSTRUCTIONS INCLUDED WITH THIS REPAIR KIT  
RELIEVE ALL PRESSURE FROM SYSTEM BEFORE REMOVING VALVE FOR SERVICE

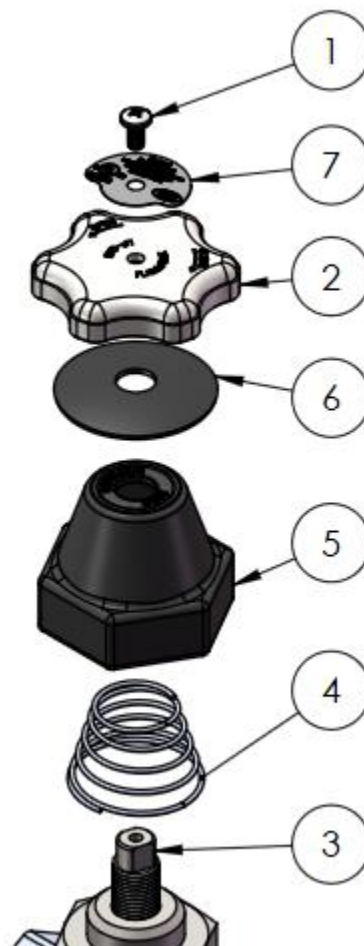


**WARNING:** These products contain a chemical known to the state of California to cause cancer and birth defects or reproductive harm

**NOTE:** Numbers in brackets [ ] refer to the number in the valve component list.

**A. Disassembly and Reassembly**

1. **EVACUATE ALL PRESSURE FROM SYSTEM BEFORE ANY DISASSEMBLY OR REPAIR.**
2. Open valve fully, remove Handle Screw [1] and Handle [2] from Stem [3] and retain.
3. Install Handle Sticker [7] to top of Handle [2] aligning holes. Mark Handle [2] with part number of assembly that weather boot service kit is being installed on.
4. Install Conical Spring [4], Weather Boot [5], Washer [6], and Handle [2] onto Stem [3].
5. Apply Loctite 271 (red) to threads of Stem [3] and install Handle Screw [1].
6. Close valve and confirm that valve remains leak free.



**B. Part Number and Component List**

1. Handle Screw
2. Handle
3. Stem
4. Conical Spring
5. Weather Boot
6. Washer
7. Handle Sticker

**Marshall Excelsior Company**

1506 George Brown Drive Marshall, MI 49068  
Phone (269) 789-6700 Fax (269) 781-8340  
[www.marshallexcelsior.com](http://www.marshallexcelsior.com)

The contents of this publication are for informational purposes only. While every effort has been made to ensure accuracy, these contents are not to be construed as warranties or guarantees, expressed or implied, regarding the products or services described herein or for their use or applicability. Marshall Excelsior Co. reserves the right to modify or improve the designs or specifications of such products at any time without notice. The MEC™ logo is the trademark of Marshall Excelsior Co.