



Installation and Operation Instructions For: MEGR-253 / 253H Series Regulators

1506 George Brown Drive Marshall, MI 49068

Phone (269) 789-6700 Fax (269) 781-8340

www.marshallexcelsior.com

!WARNING!

Failure to follow these instructions or to properly install and maintain this equipment could result in an explosion and/or fire causing property damage and personal injury or death.

Marshall Excelsior equipment must be installed, operated, and maintained in accordance with federal, state, and local codes and MEC instructions. The installation in most states must also comply with NFPA 58 and NFPA 54 standards.

Only personnel trained in the proper procedures, codes, standards, and regulations of the LP-Gas industry should install and service this equipment.



WARNING: These products contain a chemical known to the state of California to cause cancer and birth defects or reproductive harm

!DANGER!

Black changeover lever must be rotated as far as possible towards reserve cylinder before disconnecting empty cylinder.

Failure to rotate changeover lever and / or disconnection of hose while indicator is red will result in a propane gas leak which, if ignited, may cause property damage, bodily injury, or death.

Description

The MEC Automatic Changeover Regulator automatically redirects LP gas vapor flow from an empty designated service cylinder to a reserve cylinder, without interruption of service. It is ideal for use with Recreational Vehicles (RV's), small cottages and cabins.

!CAUTION!

The MEC regulators are to be installed or adjusted by qualified LP Gas or RV service personnel only. Contact a qualified LP Gas or RV dealer for installation.

Operation

#10 sheet metal screws recommended to install into mounting holes on regulator base.

Ensure that the regulator has been mounted with the vent pointing downward so that water or debris cannot gather in the regulator. Place one of the two cylinders in "primary" by switching the black changeover lever in the direction of the selected cylinder. The arrow on the lever will denote the "primary" side. Open both cylinder valves slowly. The indicator on the top of the regulator will turn green.

The "primary" side of the regulator will continue to supply gas as long as sufficient gas is present in the "primary" cylinder. When pressure in the cylinder drops below a designated level, the "reserve" side will open and provide supplemental pressure that maintains the Reserve Capacity noted in the "Specifications" table. At the time that the "primary" cylinder becomes exhausted, the indicator on the changeover lever will turn partial red and green, indicating a cylinder change can be made.

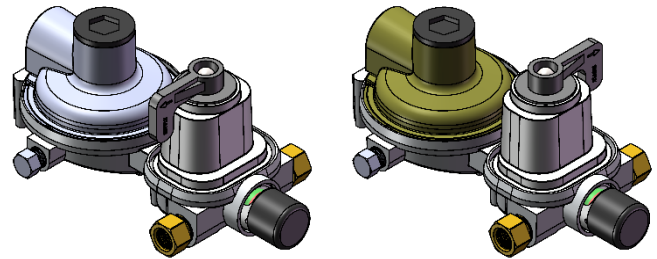


Figure 1: MEGR-253 & MEGR-253H

Cylinder Exchange

Prior to removing the empty cylinder, position the black changeover lever so that it points to the alternate cylinder that is now supplying the regulator. Close the valve on the empty cylinder and remove. After the empty cylinder is refilled and reconnected, slowly open the cylinder valve. The new cylinder is now the reserve cylinder. The indicator at the top of the regulator will turn green.

!WARNING!

Never check for leaks with an open flame. Do not check for leaks using ammoniated or chlorinated household type detergents. Only use a solution of water and liquid soap to check for leaks. These can cause cracks to form on the metal tubing and brass fittings. If the leak cannot be located, take the unit to a LP Gas service representative.

Specifications:

BTU Capacity (propane)

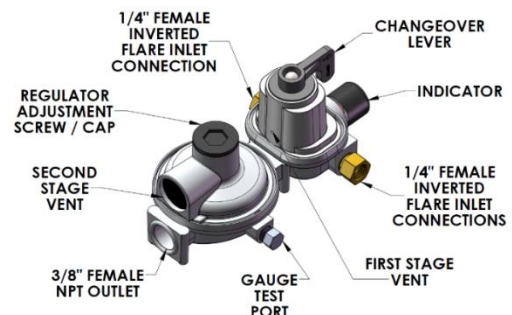
SPECIFICATIONS				
Part Number	Inlet Pressure	Outlet Setting Pressure	Primary Capacity BTU/HR	Reserve Capacity BTU/HR
MEGR-253	100 PSI / 689 kPa	11" W.C.	225,000*	150,000*
MEGR-253H	100 PSI / 689 kPa	11" W.C.	350,000*	200,000*
MEGR-253L	100 PSI / 689 kPa	11" W.C.	150,000*	100,000*

Inlet: 1/4" NPT

Outlet: 3/8" NPT

Listed to UL 144

* Based on 100 PSIG inlet and 20% droop at 11" WC flowing at 30 SCFH propane.



The contents of this publication are for informational purposes only. While every effort has been made to ensure accuracy, these contents are not to be construed as warranties or guarantees, expressed or implied, regarding the products or services described herein or for their use or applicability. Marshall Excelsior Co. reserves the right to modify or improve the designs or specifications of such products at any time without notice. The MEC™ logo is the trademark of Marshall Excelsior Co.