

**ME671IBC-SRK SEAL REPAIR KIT
 FOR: ME671DIBC SERIES
 WITHDRAWAL VALVES**

!!!WARNING!!!

READ AND UNDERSTAND ALL INSTRUCTIONS INCLUDED WITH THIS REPAIR KIT
 RELIEVE ALL PRESSURE FROM SYSTEM BEFORE REMOVING VALVE FOR SERVICE

NOTE: Numbers in brackets [] refer to the number in the valve component list.



WARNING: These products contain a chemical known to the state of California to cause cancer and birth defects or reproductive harm

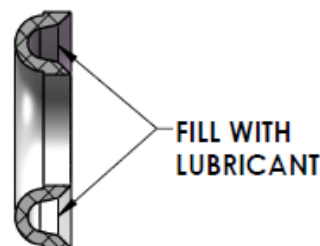
A. Disassembly

1. **EVACUATE ALL PRESSURE FROM SYSTEM BEFORE ANY DISASSEMBLY OR REPAIR.**
2. Remove Hex Nut [16], Split Lock Washer [15], Information Plate [14], and Handwheel [13] from Valve Shaft [3] and retain.
3. Remove Valve Bonnet [5] from Valve Body [1] and retain.
4. Remove Bonnet Seal [4] from Valve Body [1] and discard.
5. Remove Valve Shaft Gland [12] from Valve Bonnet [5] and retain.
6. Remove Valve Shaft Gland O-Ring [10] from Valve Shaft Gland [12] and discard.
7. Remove (2) Stem Bushing Nests [9], Stem Bushings [8], Gland Seal [11], Stem Bushing Washer [7], and Valve Spring [6] from Valve Bonnet [5]. Discard (2) Stem Bushing Nests [9], Stem Bushing [8], and Gland Seal [11]. Retain Stem Bushing Washer [7], and Valve Spring [6].
8. Remove Valve Shaft [3] from Valve Bonnet [5] and retain.
9. Remove IBC Gasket Holder Assembly [2] from Valve Shaft [3] and discard.
10. Inspect Valve Body [1] and clean if necessary, be sure interior is free of dirt, residue and foreign particles.

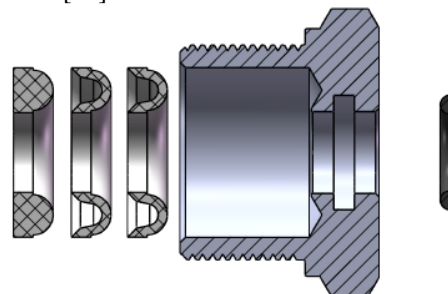
B. Reassembly

1. Apply Loctite #271 to internal threads of Valve Shaft [3] and install IBC Gasket Holder Assembly [2].
2. Apply Lubriplate to Acme threads of Valve Shaft [3] or Valve Bonnet [5] and install Valve Shaft [3] into Valve Bonnet [5].
3. Install Valve Spring [6] and Stem Bushing Washer [7] into Valve Bonnet [5].

4. Apply Lubriplate or equivalent grease to Stem Bushing [8], (2) Stem Bushing Nests [9] and Valve Shaft Gland O-Ring [10]. Fill inside of (2) Stem Bushing Nests [9] with lubricant as shown.



5. Install components from Step 4 into Valve Shaft Gland [12] as shown.



6. Install Gland Seal [11] into Valve Bonnet [5].
7. Apply Loctite #271 to threads of Valve Shaft Gland [12] and install into Valve Bonnet [5], tighten.
8. Install Bonnet Seal [4] into Valve Body [1].
9. Thread Valve Shaft [3] into Valve Bonnet [5] until Gasket Holder Assembly [2] bottoms on Valve Bonnet [5]. Apply Loctite #271 to Threads of Valve Bonnet [5] and install into Valve Body [1].
10. Install Handwheel [13], Information Plate [14], Split Lock Washer [15], and Hex Nut [16] onto Valve Shaft [3] and tighten.
11. Connect the Valve Assembly outlet to a pressure source of at least 150 psi. Check for leaks at all joints and stem seals using a suitable leak detector solution such as "Marshall Excelsior" leak detector.
CAUTION: Do Not Use the valve if any joints continue to leak under pressure.

Marshall Excelsior Company

1506 George Brown Drive Marshall, MI 49068
 Phone (269) 789-6700 Fax (269) 781-8340
www.marshallexcelsior.com

The contents of this publication are for informational purposes only. While every effort has been made to ensure accuracy, these contents are not to be construed as warranties or guarantees, expressed or implied, regarding the products or services described herein or for their use or applicability. Marshall Excelsior Co. reserves the right to modify or improve the designs or specifications of such products at any time without notice. The MEC™ logo is the trademark of Marshall Excelsior Co.

ME671IBC-SRK SEAL REPAIR KIT

C. Component List

1. Valve Body
2. IBC Gasket Holder Assembly
3. Valve Shaft
4. Bonnet Seal
5. Valve Bonnet
6. Valve Spring
7. Stem Bushing Washer
8. Stem Bushing
9. Stem Bushing Nest, 2 required
10. Valve Shaft Gland O-Ring
11. Gland Seal
12. Valve Shaft Gland
13. Handwheel
14. Information Plate
15. Split Lock Washer
16. Hex Nut

