

**ME815IBC/BRK SERIES**  
**BONNET REPAIR KIT FOR MARSHALL EXCELSIOR GLOBE & ANGLE VALVES**  
**WITH INTEGRATED BACKCHECK**  
**FOR: ME815IBC/ME825IBC 2" NPT SIZE**  
**READ AND UNDERSTAND ALL INSTRUCTIONS INCLUDED WITH THIS REPAIR KIT**

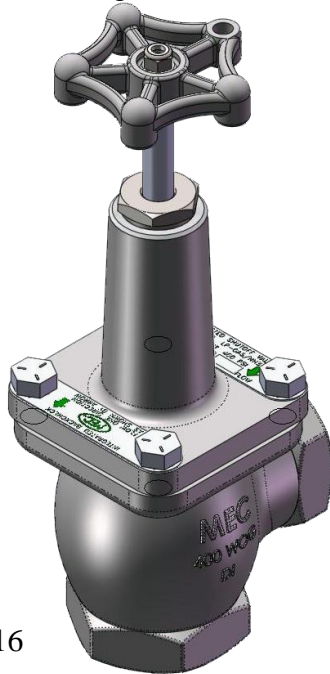
---



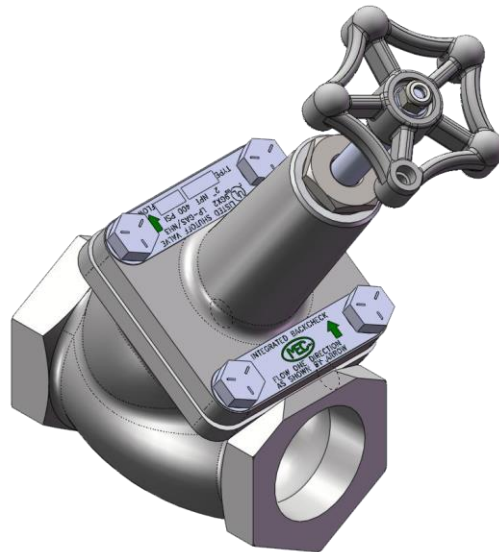
**WARNING:** These products contain a chemical known to the state of California to cause cancer and birth defects or reproductive harm

**VALVE BONNET DISASSEMBLY INSTRUCTIONS**

1. Turn handwheel counterclockwise to fully open the valve.
2. Remove handwheel retaining nut and lock washer from shaft.
3. Remove handwheel from valve shaft and retain.
4. Remove the bonnet bolts (4) from the valve body and retain.
5. Remove information plates and discard.
6. Remove bonnet assembly from the valve body and discard.
7. Remove bonnet gasket from valve body and discard.



ME815IBC-16



ME825IBC-16

**VALVE BONNET REPLACEMENT INSTRUCTIONS**

1. Install new bonnet gasket into valve body.
2. Install new bonnet assembly into valve body as shown and align with bolt holes in flange.
3. Install new valve and backcheck information plates and bonnet bolts (4) with directional arrows as shown.
4. Tighten bonnet bolts with a minimum of 100 foot-pounds of torque.
5. Install retained handwheel, new lock washer and new retaining nut as shown and tighten.
6. Close the valve by turning the handwheel clockwise until the valve seats.
7. Connect the valve assembly inlet to a pressure source of at least 150 PSI.  
Check for leaks (as evidenced by bubbles) at all joints and sealing surfaces by submersing the valve in water, (or by applying Marshall Excelsior "leak detector" solution to all joints).
8. **CAUTION:** DO NOT USE THE VALVE IF ANY JOINT OR SEALING SURFACE CONTINUES TO LEAK UNDER PRESSURE.