



ME1075-SARK/ME1005-SARK STEM ASSEMBLY REPAIR KIT

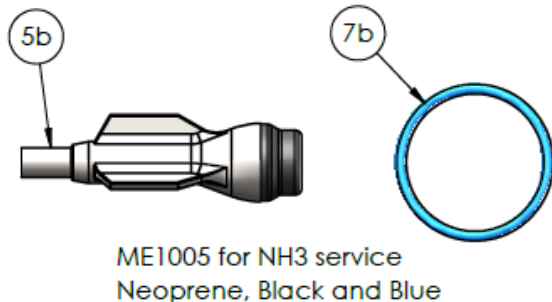
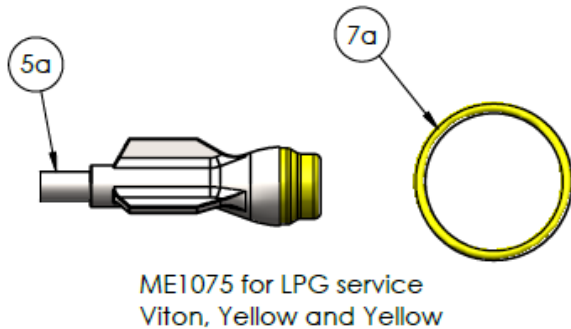
!!!WARNING!!!

READ AND UNDERSTAND ALL INSTRUCTIONS INCLUDED WITH THIS REPAIR KIT
RELIEVE ALL PRESSURE FROM SYSTEM BEFORE REMOVING VALVE FOR SERVICE

NOTE: Numbers in brackets [] refer to the number in the valve component list.

A. Disassembly

1. **EVACUATE ALL PRESSURE FROM SYSTEM BEFORE ANY DISASSEMBLY OR REPAIR.**
2. Remove four Flange Bolts [15], Flange [14] and Flange O-ring [7]. Discard Flange O-ring [7].
3. Remove Stem Toggle Pin [17], Handle [16], and Thrust Washer [13]. Discard Stem Toggle Pin [17] and Thrust Washer [13].
4. Remove Spring Bonnet [2] and Spring Bonnet O-ring [3]. Discard Spring Bonnet O-ring [3].
5. Remove Packing Bonnet [6] and Packing Bonnet O-ring [7]. Discard Packing Bonnet O-ring [7].
6. Remove and retain Stem Bushing Washer [10] and Packing Spring [11].
7. Remove Wiper O-Ring [12], two Stem Bushings [8] and Stem Bushing Adapter [9] and discard.
8. Remove Stem Assembly [5] and Main Spring [4]. Discard Stem Assembly [5].
9. Inspect Body [1], Bonnets [2, 6], and Flange [14] and clean, if necessary. Be sure interior is free of dirt, residue, and foreign particles.



B. Reassembly

1. Install Main Spring [4] onto Stem Assembly [5].
2. Install Stem Assembly [5] into Body [1].
3. Lubricate and install Spring Bonnet O-ring [3] onto Body [1].
4. Apply thread locker to Spring Bonnet [2] threads and install into Body [1]. (Manufacturer recommends tightening with a minimum of 100 Ft-Lbs. of torque.)
5. Lubricate and install Wiper O-ring [12] into Packing Bonnet [6].
6. Lubricate and install two Stem Bushings [8], Stem Bushing Adapter [9], Stem Bushing Washer [10], and Packing Spring [11] into Packing Bonnet [6].
7. Lubricate and install Packing Bonnet O-ring [7] onto Packing Bonnet [6].
8. Apply thread locker to Packing Bonnet [6] threads and install into Spring Bonnet [2]. (Manufacturer recommends tightening with a minimum of 100 Ft-Lbs. of torque.)
9. Retorque Spring Bonnet [2]. (Manufacturer recommends tightening with a minimum of 100 Ft-Lbs. of torque.)
10. Install Thrust Washer [13] on top of Packing Bonnet [6].
11. Install Handle [16] onto top of Stem Assembly [5].
12. Install Stem Toggle Pin [17] into Handle [16].
13. Lubricated and install Flange O-ring [7] onto Body [1].
14. Apply tread locker to Flange Bolts [15] threads and install through Body [1] into Flange [14].
15. Connect the valve assembly outlet to a pressure source (Manufacturer recommends at least 150 PSI). Check for leaks at all joints using a suitable leak detector solution such as "Marshall Excelsior" leak detector.

CAUTION: DO NOT USE THE VALVE IF ANY JOINT CONTINUES TO LEAK UNDER PRESSURE.

Marshall Excelsior Company

1506 George Brown Drive Marshall, MI 49068
Phone (269) 789-6700 Fax (269) 781-8340
www.marshallexcelsior.com

The contents of this publication are for informational purposes only. While every effort has been made to ensure accuracy, these contents are not to be construed as warranties or guarantees, expressed or implied, regarding the products or services described herein or for their use or applicability. Marshall Excelsior Co. reserves the right to modify or improve the designs or specifications of such products at any time without notice. The MEC™ logo is the trademark of Marshall Excelsior Co.

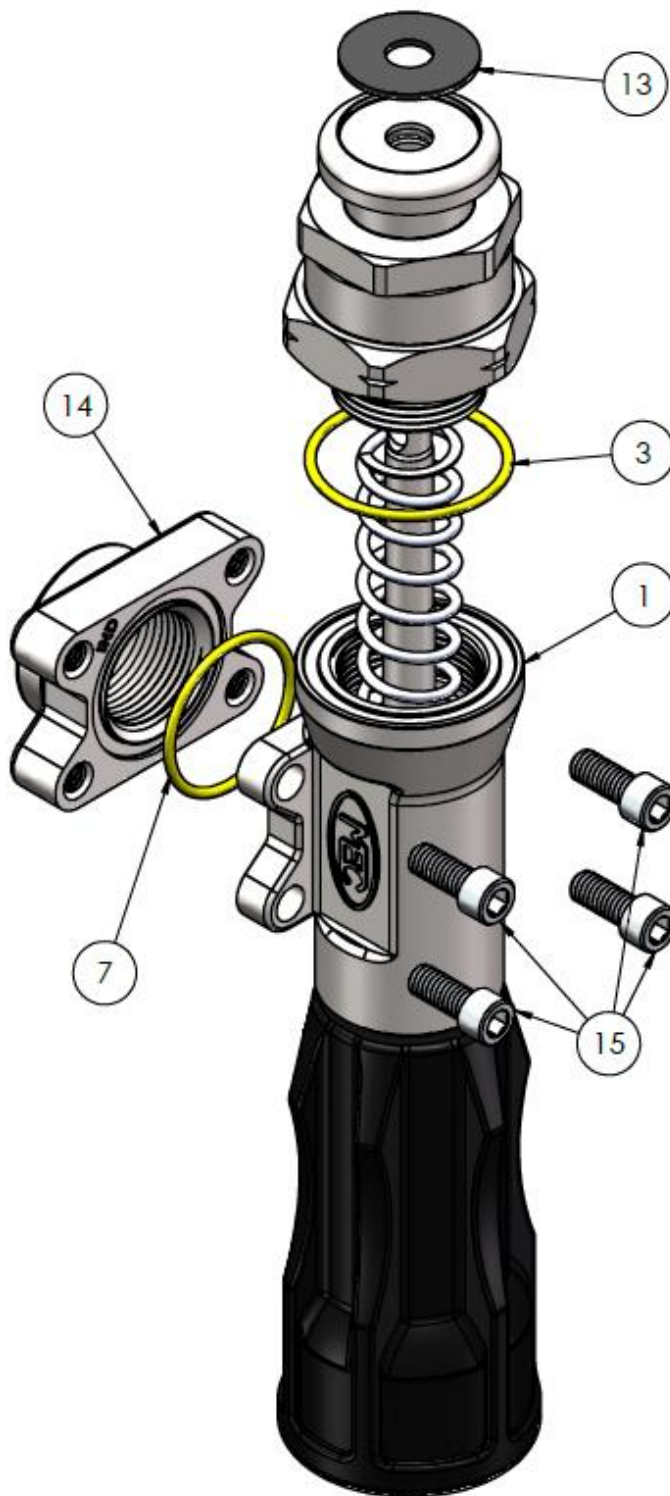
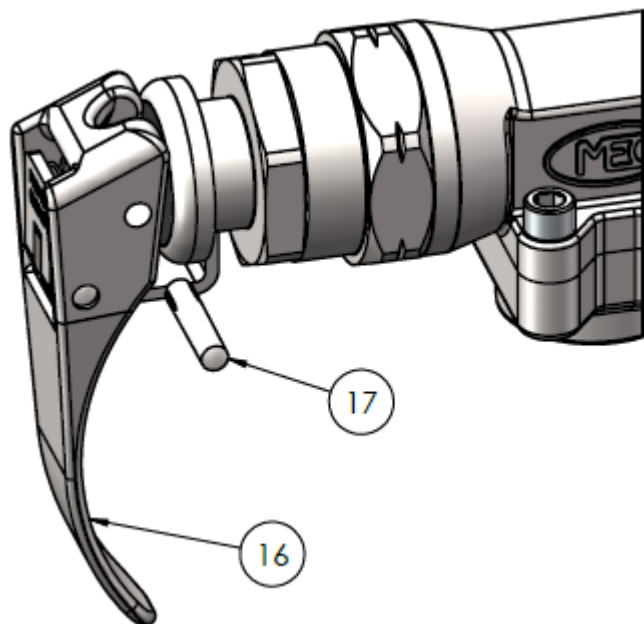
ME1075-SARK/ME1005-SARK STEM ASSEMBLY REPAIR KIT

C. \Component List

1. Body
2. Spring Bonnet
3. Spring Bonnet O-ring
 - a. Viton/Yellow for ME1075
 - b. Neoprene/Blue for ME1005
4. Main Spring
5. Stem Assembly
 - a. Viton/Yellow for ME1075
 - b. Neoprene/Black for ME1005
6. Packing Bonnet
7. Packing Bonnet/Flange O-ring
 - a. Viton/Yellow for ME1075
 - b. Neoprene/Blue for ME1005
8. Stem Bushing
9. Stem Bushing Adapter
10. Stem Bushing Washer
11. Packing Spring
12. Wiper O-ring
13. Thrust Washer
14. Flange (NPT or Swivel)
15. Flange Bolts
16. Handle
17. Stem Toggle Pin



WARNING: These products contain a chemical known to the state of California to cause cancer and birth defects or reproductive harm

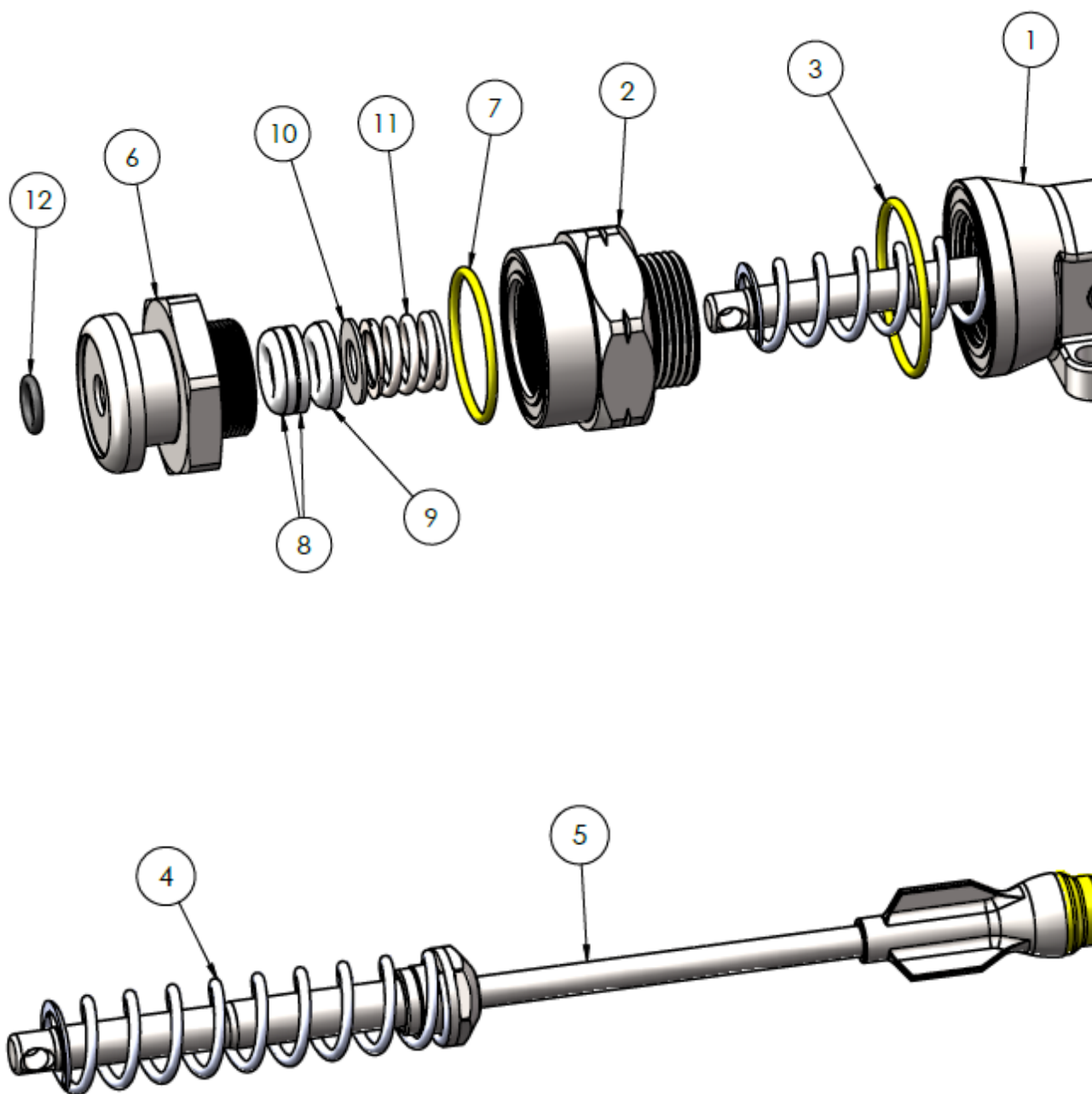


Marshall Excelsior Company

1506 George Brown Drive Marshall, MI 49068
Phone (269) 789-6700 Fax (269) 781-8340
www.marshallexcelsior.com

The contents of this publication are for informational purposes only. While every effort has been made to ensure accuracy, these contents are not to be construed as warranties or guarantees, expressed or implied, regarding the products or services described herein or for their use or applicability. Marshall Excelsior Co. reserves the right to modify or improve the designs or specifications of such products at any time without notice. The MEC™ logo is the trademark of Marshall Excelsior Co.

**ME1075-SARK/ME1005-SARK
STEM ASSEMBLY REPAIR KIT**



Marshall Excelsior Company
1506 George Brown Drive Marshall, MI 49068
Phone (269) 789-6700 Fax (269) 781-8340
www.marshallexcelsior.com

The contents of this publication are for informational purposes only. While every effort has been made to ensure accuracy, these contents are not to be construed as warranties or guarantees, expressed or implied, regarding the products or services described herein or for their use or applicability. Marshall Excelsior Co. reserves the right to modify or improve the designs or specifications of such products at any time without notice. The MEC™ logo is the trademark of Marshall Excelsior Co.