

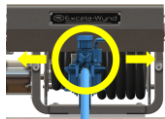


GENERAL SERVICE INSTRUCTIONS for ME9000LH-17/25 EXCELA-WYND™ HOSE REEL



BEFORE SERVICING THE EXCELA-WYND™ HOSE REEL PLEASE READ THESE IMPORTANT SAFETY WARNINGS

WARNING! Risk of injury from pinch points – Keep hands and fingers away from hose guide.



WARNING! Risk of injury from pinch points – Do Not operate reel without gear and chain guards in place.



WARNING! Risk of injury from pinch / sever points – Keep fingers away from inlet flange.



WARNING! - Risk of injury - The hose reel is very heavy. Use a suitable mechanical hoist or crane to lift, move and set reel.



WARNING! - Risk of injury - Disconnect power and relieve system pressure prior to servicing reel and controller.



WARNING! This product contains a chemical known to the state of California to cause cancer and birth defects or reproductive harm.



WARNING! - Failure to follow these instructions or to properly install and maintain this equipment could result in an explosion and/or fire causing property damage and personal injury or death. MEC equipment shall be installed, operated and maintained in accordance with federal, state and local codes, and manufacturer's instructions. The installation in most states shall also comply with NFPA No. 58 and ANSI/CGA-2.1. Only personnel trained in the proper procedures, codes, standards and regulations of the LP-Gas industry should install and service this equipment. Installation or service inconsistent with these instructions may damage the reel, increase the risk of injury or void the warranty.



SERVICE AND MAINTENANCE

Marshall Excelsior's Excelsior-Wynd™ hose reels are constructed of heavy-duty, corrosion resistant materials that provide a 10-year safe-service-life under normal conditions with proper maintenance. However, they are subject to wear, vibration, contaminants, corrosion and aging of seals that will eventually render them inoperative. Harsh environments, heavy use, abuse and inadequate maintenance will shorten their safe-service-life. Be aware of the hazards that can arise from using aging equipment and reduce associated risks by regularly inspecting and properly maintaining this equipment.



- Follow the hose manufacturer's instructions for installation, maintenance and repair of hose.
- Use only Ø1" ID hose on the ME9000LH-17/25 Excelsior-Wynd hose reel.
- The ME9000LH-17/25 Excelsior-Wynd hose reel must always be powered by a BASE Engineering VSC9000 variable speed controller.
- An anti-seize compound must be applied to the external threads of all fasteners when installing or servicing the hose reel. MEC recommends using a Nickel-based (copper-free) anti-seize compound.
- MEC recommends using a high-quality lithium grease, such as Mystik® Lubricants JT-6® high temp #2, or equivalent.
- Use only Valvoline Synthetic 75W-90 gear oil, or equivalent, in the gearbox. Do not exceed a total of 2 oz. of gear oil.
- ME854 & ME855 Series Swivels do not require any lubrication. See Form 1172 for swivel installation, maintenance & repair.
- Following servicing of any pressure connection, check for leaks prior to putting hose reel back into service: pressurize hose and check for leaks at swivel inlet flange, swivel outlet flange, riser flange, riser / hose connection and hose end valve / hose connection.

Use the camera on your smart phone or device to scan the following QR codes to access additional instructions and videos.

Form 1176-IOM, ME9000 Series Hose Reel Installation, Operation and Maintenance Manual



Form 1172-ME854 & ME855 Series Swivel Connector Instruction Manual



Weather Shield Installation and Removal Video

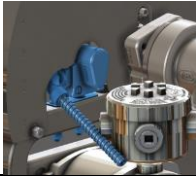




GENERAL SERVICE INSTRUCTIONS for ME9000LH-17/25 EXCELA-WYND™ HOSE REEL



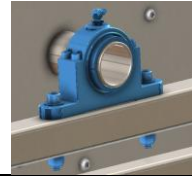
ME9000-SEK, Sensor Kit



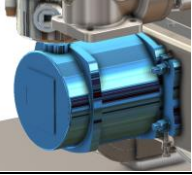
ME9000-GGK, Gear Guard Kit



ME9000-SBK, Split Bearing Kit



ME9000-MHK, Motor Kit



ME9000-MGK, Motor Gear Kit



ME9000-GSK, Gear Segment Kit



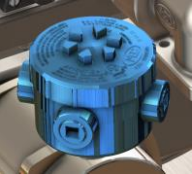
ME9000-MCK, Manual Crank Kit



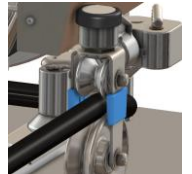
ME9000-LOR, LH Offset Riser Kit



ME9000-JBA, Junction Box Kit



ME9000-HGS Hose Guard Kit



ME9000-LWC, Level Wind Cover Kit



ME9000-CPK, Connecting Pin Kit



ME9000-LCK, Chain Assembly



ME9000-BER, Bearing Rod Kit



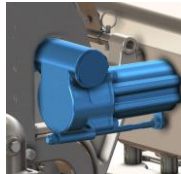
ME9000-ISK, Idler Sprocket Kit



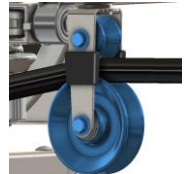
ME9000-LWG, Level Wind Gear Kit



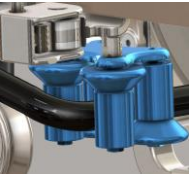
ME9000-GBK, Gearbox Kit



ME9000-GMS, Gimbal Roller Set



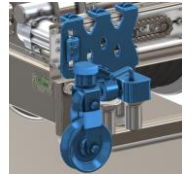
ME9000-GRS, Guide Roller Assembly



ME9000-CAK, Carriage Assembly



ME9000-LCG, Gimbal Assembly



ME9000-CBK, Carriage Slider Bearings



ME9000-VSC, Var. Speed Controller Kit



ME9000-FFK, Firmware Flashing Kit

