



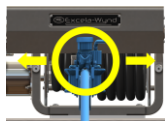
# ME9000-CPK CONNECTING PIN SERVICE KIT INSTRUCTIONS

## for ME9000LH-17/25 EXCELA-WYND™ HOSE REEL



### BEFORE SERVICING THE EXCELA-WYND™ HOSE REEL PLEASE READ THESE IMPORTANT SAFETY WARNINGS

**WARNING!** Risk of injury from pinch points – Keep hands and fingers away from hose guide.



**WARNING!** Risk of injury from pinch points – Do Not operate reel without gear and chain guards in place.



**WARNING!** Risk of injury from pinch / sever points – Keep fingers away from inlet flange.



**WARNING!** - Risk of injury - The hose reel is very heavy. Use a suitable mechanical hoist or crane to lift, move and set reel.



**WARNING!** - Risk of injury - Disconnect power and relieve system pressure prior to servicing reel and controller.



**WARNING!** This product contains a chemical known to the state of California to cause cancer and birth defects or reproductive harm.



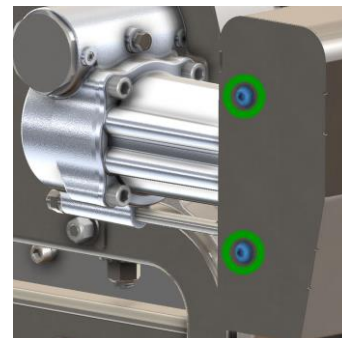
**WARNING!** - Failure to follow these instructions or to properly install and maintain this equipment could result in an explosion and/or fire causing property damage and personal injury or death. MEC equipment must be installed, operated and maintained in accordance with federal, state and local codes, and manufacturer's instructions. The installation in most states must also comply with NFPA No. 58 and ANSI/CGA-2.1. Only personnel trained in the proper procedures, codes, standards and regulations of the LP-Gas industry should install and service this equipment. Installation or service inconsistent with these instructions may damage the reel, increase the risk of injury or void the warranty.

### REMOVE THE EXISTING CONNECTING PIN

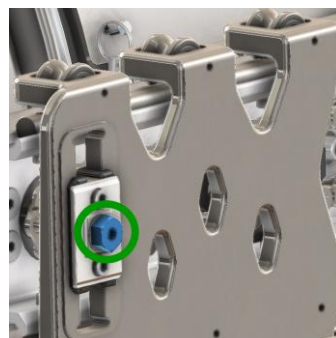
1) Using a **T40** Torx drive, remove the 4 cover mounting screws.



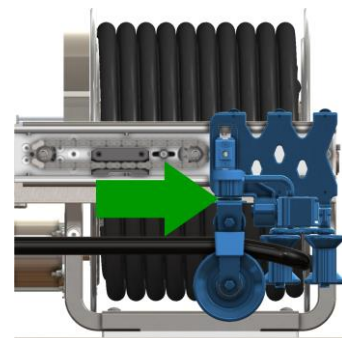
2) Slide the cover up and off (not shown).



3) Locate the Connecting Pin on the carriage slider.



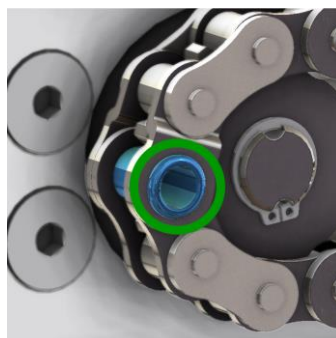
4) Using a **3/4"** wrench, remove the connecting pin and lock washer and discard.



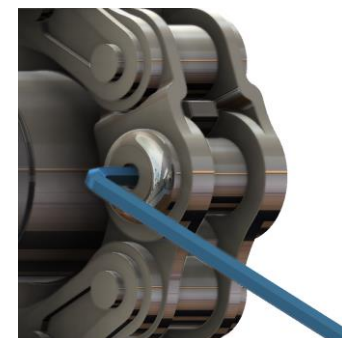
5) Slide the carriage assembly to the right to access the chain.

**Note:** Don't let the carriage fall off the bearing rods or it could cause injury or damage.

6) Locate the connector link in the roller chain.



7) If part of a broken connecting pin is still in the connector link but is accessible, remove it using pliers.



8) If the connecting pin broke off inside the connector link, use the short end of a "stubby" hex wrench to push it out through the hole in the back.

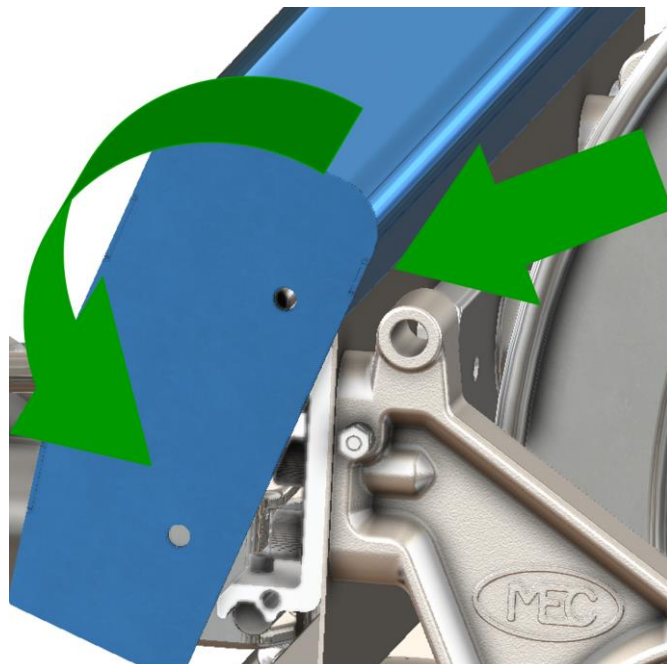
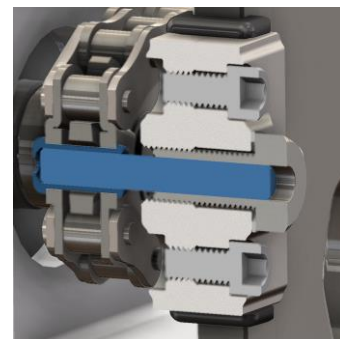
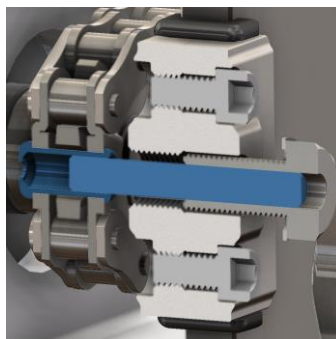
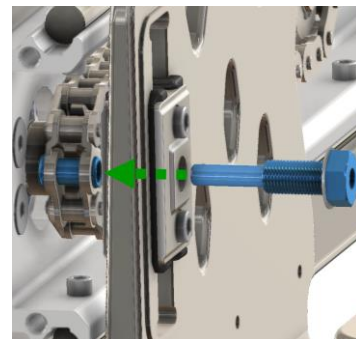


# ME9000-CPK CONNECTING PIN SERVICE KIT INSTRUCTIONS for ME9000LH-17/25 EXCELA-WYND™ HOSE REEL



## INSTALL THE NEW CONNECTING PIN

- 1) Install the lock washer on the connecting pin.
- 2) Apply a small amount of anti-seize to the threads and pin (not shown).
- 3) Move the carriage and slider so the hole in the slider is aligned with the hole in the connecting link.
- 4) Insert the connecting pin through the slider and into the connecting link.
- 5) Thread the connecting pin into the carriage slider and tighten securely.
- 6) Reinstall the cover:
  - a. Hook the rear of the cover behind the back plate of the level wind.
  - b. Rotate the cover and lower it into position until the mounting holes are aligned.
  - c. Apply a medium strength thread locker to the threads of the screws and tighten securely.



Use the camera on your smart phone or device to scan the following QR codes to access additional instructions and videos.

### Form 1176-IOM, Operation and Maintenance Manual



### ME9000-CPK, Connecting Pin Service Kit Installation VIDEO

