



WARNING: Product contains sever points. Keep hands, fingers, or other appendages away from valve inlet or outlet ports during transportation, installation and maintenance.

WARNING!

Failure to follow these instructions or to properly install and maintain this equipment could result in an explosion and/or fire causing property damage and personal injury or death.

Install, operate and maintain Marshall Excelsior Co. equipment in accordance with federal, state, and local codes and these instructions. The installation in most states must also comply with NFPA standards 54, 58 and 59.

Only personnel trained in the proper procedures, codes, standards and regulations of the LP-Gas industry should install, maintain and service this equipment. Be sure all instructions are read and understood before installation, operation and maintenance. These instructions must be passed along to the end user of the product.

GENERAL WARNING!

Marshall Excelsior products are mechanical devices that are subject to wear, contaminants, corrosion, and aging of components made of materials such as elastomers and metal. Over time these devices will eventually become inoperative. The safe service life of these products will reflect the environment and conditions of use that they are subjected to. **REGULAR INSPECTION AND MAINTENANCE IS ESSENTIAL.** Marshall Excelsior products have a long record of quality and service; thus, end users of the equipment may overlook the hazards that can arise from using aging devices that have outlived their safe service life.



WARNING: These products contain a chemical known to the state of California to cause cancer and birth defects or reproductive harm

Do not attempt to remove the bypass valve until you have bled off the system pressure. On systems with meters, the differential valve will keep liquid under pressure in the pump, meter and piping even when the hose is emptied.

A. Disassembly

1. **EVACUATE ALL PRESSURE FROM SYSTEM BEFORE ANY DISASSEMBLY OR REPAIR.**
2. Remove Hex Screw from Flange and retain Hex Screw and discard Flange O-Ring [14].
3. Remove Handle Screw [6] and Handle Washer [12] from Gland Assembly [2] and retain.
4. Remove Handle [11], Handle Spring [13], and Spring Bearing [10] from the Gland Assembly [2] and retain.
5. Remove Lever Plate Screws from Body [1] and retain.
6. Remove Lever Plate Assembly [7] and Handle Plate Spacer [8] from the Gland Assembly [2] and retain.
7. Remove Set Screw [5] from Body [1] and discard.
8. Remove Spool Plug Assembly [3] and Spool Assembly [4] from Body [1] and discard.
9. Remove Gland Assembly [2] from Body [1] and discard.
10. Inspect Body [1] and clean if necessary, be sure interior is free of dirt, residue and foreign particles.

B. Reassembly

1. Apply Anti-Seize to the Gland Assembly [2] thread. Install Gland Assembly into Body [1]. Recommended torque spec 100 ft-lb. See Figure 2 and Figure 3 for Spool orientation when installing Gland Assembly.
2. Install Spool Assembly [4] into Body [1]. (See Figure 2 and Figure 3)
3. Apply Anti-Seize to the Spool Plug Assembly [2] thread. Install Spool Plug Assembly [3] into Body [1]. Recommended torque spec 100 ft-lb.

1506 George Brown Dr. Marshall, MI 49068
Phone (269) 789-6700 Fax (269) 781-8340
www.marshallexcelsior.com

The contents of this publication are for informational purposes only. While every effort has been made to ensure accuracy, these contents are not to be construed as warranties or guarantees, expressed or implied, regarding the products or services described herein or for their use or applicability. Marshall Excelsior Co. reserves the right to modify or improve the designs or specifications of such products at any time without notice. The MEC™ logo is the trademark of Marshall Excelsior Co.

VERSA FILL™ BYPASS VALVE ME845-VRK VALVE REPAIR KIT

Reassembly Continued

4. Install Set Screws [5] into Body [1]. Recommended torque spec 50 in-lb.
5. Install Handle Plate Spacer [8] and Lever Plate Assembly [7] onto Gland Assembly [2]. Apply low strength Loctite to Lever Plate Screw Use Lever Plate Screws [9] to retain Handle Plate Spacer and Lever Plate to Body [1]. Recommended torque spec 50 in-lb.
6. Install Spring Bearing [10], Handle Spring [13], and Handle [11] onto Gland Assembly [2]. When installing Handle, make sure stem face with notch is facing outlet. (See Figure 1, Detail A)
7. Apply low strength Loctite to Handle Screw. Install Handle Washer [12] and Handle Screw [6] into Gland Assembly. Recommended torque spec 50 in-lb.

Parts List			REPAIR KITS
Ref. #	DESCRIPTION	QTY	ME845-VRK
1	BODY	1	
2	GLAND ASSEMBLY	1	✓
3	SPOOL PLUG ASSEMBLY	1	✓
4	SPOOL ASSEMBLY	1	✓
5	SET SCREW	2	✓
6	HANDLE SCREW	1	
7	LEVER PLATE ASSEMBLY	1	
8	HANDLE PLATE SPACER	1	
9	LEVER PLATE SCREW	4	
10	SPRING BEARING	1	
11	HANDLE MACHINED	1	
12	HANDLE WASHER	1	
13	HANDLE SPRING	1	
14	*O-RING (FLANGE CONNECTIONS)	2	✓

* NOT SHOWN

Table 1: BOM

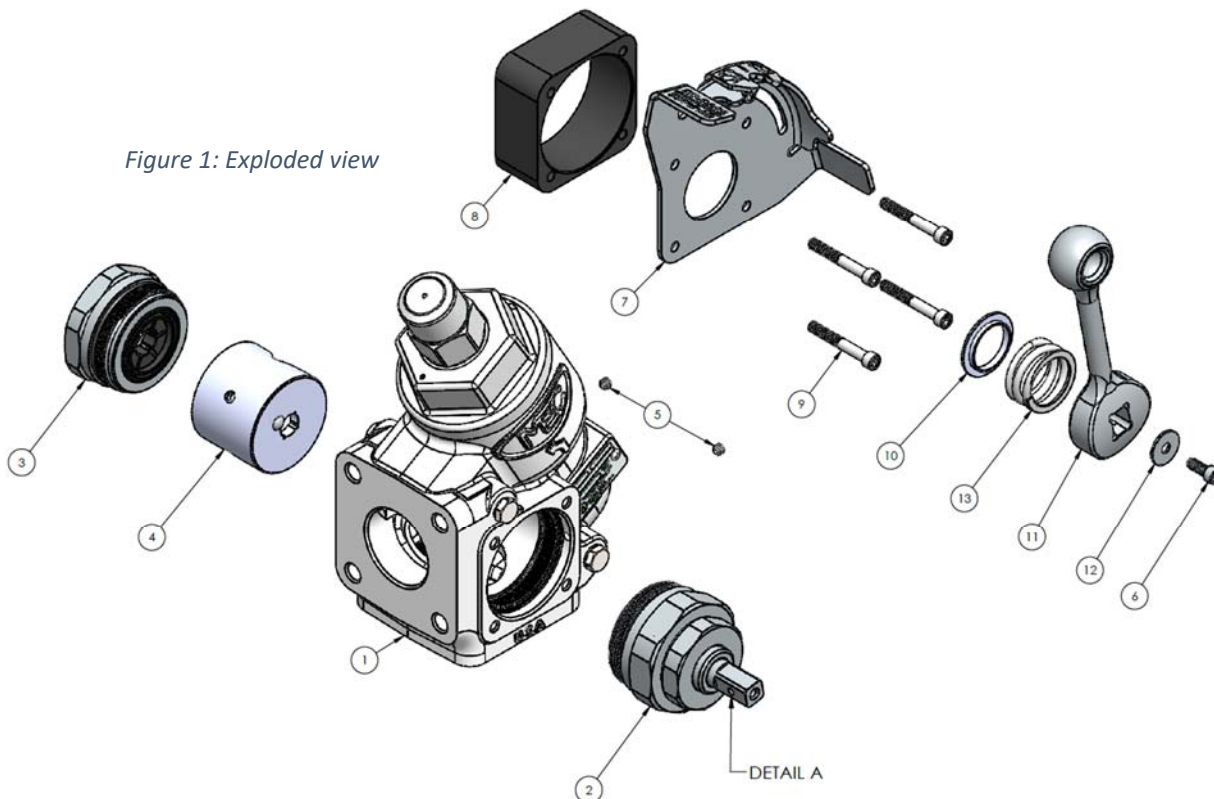
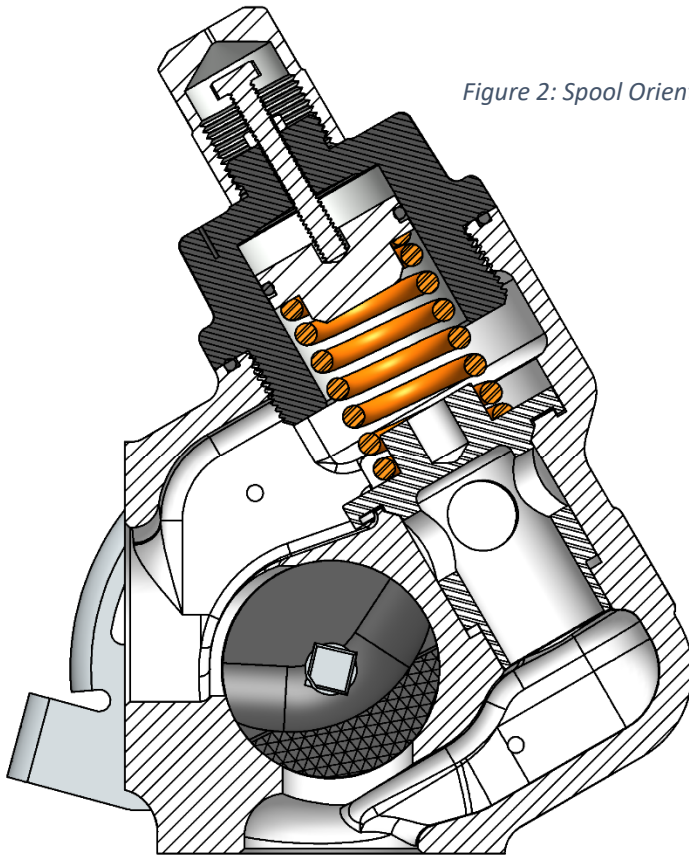


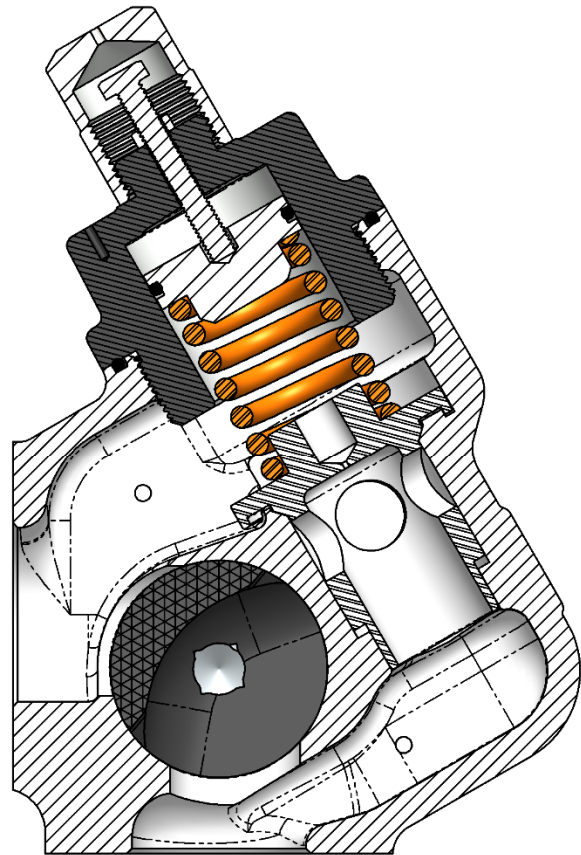
Figure 1: Exploded view

VERSA FILL™ BYPASS VALVE
ME845-VRK VALVE REPAIR KIT

Figure 2: Spool Orientation



Left Handed, By-Pass Mode



Right Handed, By-Pass Mode

Figure 3: Spool Orientation

