



**WARNING:** Product contains sever points. Keep hands, fingers, or other appendages away from valve inlet or outlet ports during transportation, installation and maintenance.

**WARNING!**

Failure to follow these instructions or to properly install and maintain this equipment could result in an explosion and/or fire causing property damage and personal injury or death.

Install, operate and maintain Marshall Excelsior Co. equipment in accordance with federal, state, and local codes and these instructions. The installation in most states must also comply with NFPA standards 54, 58 and 59.

Only personnel trained in the proper procedures, codes, standards and regulations of the LP-Gas industry should install, maintain and service this equipment. Be sure all instructions are read and understood before installation, operation and maintenance. These instructions must be passed along to the end user of the product.

**GENERAL WARNING!**

Marshall Excelsior products are mechanical devices that are subject to wear, contaminants, corrosion, and aging of components made of materials such as elastomers and metal. Over time these devices will eventually become inoperative. The safe service life of these products will reflect the environment and conditions of use that they are subjected to. **REGULAR INSPECTION AND MAINTENANCE IS ESSENTIAL.** Marshall Excelsior products have a long record of quality and service; thus, end users of the equipment may overlook the hazards that can arise from using aging devices that have outlived their safe service life.



**WARNING:** These products contain a chemical known to the state of California to cause cancer and birth defects or reproductive harm

Do not attempt to remove the bypass valve until you have bled off the system pressure. On systems with meters, the differential valve will keep liquid under pressure in the pump, meter and piping even when the hose is emptied.

## A. Disassembly

1. **EVACUATE ALL PRESSURE FROM SYSTEM BEFORE ANY DISASSEMBLY OR REPAIR.**
2. Remove Hex Screw from Flange and retain Hex Screw and discard Flange O-Ring [30].
3. Remove Handle Screw [22] and Handle Washer [29] from Spool Stem [8] and retain.
4. Remove Handle [28], Handle Spring [31], and Spring Bearing [27] from the Gland Assembly. Discard Spring Bearing and retain all other components.
5. Remove Lever Plate Screws [26] from Body [1] and retain.
6. Remove Lever Plate [24] and Handle Plate Spacer [25] from the Gland Assembly and retain.
7. Loosen Set Screw [15].
8. Remove Spool Plug Assembly from Body [1] and retain.
9. **DO NOT REMOVE** Spool Assembly [6] from Body [1].
10. Remove Spool Bearing Disc [10], Wave Disc Spring [11], and O-ring [14] from Spool Plug [12] and discard.
11. Remove Gland Assembly from Body [1] and retain.
12. Remove Gland [2] from Spool Bonnet [9] and retain.
13. Remove O-Ring [7] from Gland [2] and discard.
14. Remove Spool Stem [8] and Compression Spring [6] from Spool Bonnet [9]
15. Remove Stem Bearing [5], V-packs [4], and Valve Shaft Bushing [3] from Spool Stem [8] and discard.
16. Remove Cap [22] from Bypass Bonnet [19] and retain.
17. Remove Stem [21] and Lock Nut [20] from Bypass Bonnet [19] and retain.
18. Remove Bypass Bonnet [19] and O-Ring [18] from Body [1]. Discard O-Ring and retain Bypass Bonnet
19. Remove Spring Guide [17] from Bypass Bonnet [19] and retain. Remove O-Ring [16] from Spring Guide [17] and discard.

1506 George Brown Dr. Marshall, MI 49068  
Phone (269) 789-6700 Fax (269) 781-8340  
[www.marshallexcelsior.com](http://www.marshallexcelsior.com)

The contents of this publication are for informational purposes only. While every effort has been made to ensure accuracy, these contents are not to be construed as warranties or guarantees, expressed or implied, regarding the products or services described herein or for their use or applicability. Marshall Excelsior Co. reserves the right to modify or improve the designs or specifications of such products at any time without notice. The MEC™ logo is the trademark of Marshall Excelsior Co.

# VERSA FILL™ BYPASS VALVE ME845-SRK SEAL REPAIR KIT

## Disassembly Continued

20. Inspect Body [1] and clean if necessary, be sure interior is free of dirt, residue and foreign particles.

## B. Reassembly

1. Apply lubricant to O-Ring [16]. Install O-Ring onto Stem Guide [17] and install into Bypass Bonnet[19].
2. Apply lubricant to O-Ring [18]. Install O-Ring onto into Body [1].
3. Apply Anti-Seize to Bypass Bonnet's [19] threads. Install Bypass Bonnet into Body [1]. Recommended torque spec of 100ft-lb.
4. Apply Anti-Seize to Stem [21]. Install Lock Nut [20] onto Stem.
5. Install Stem [21] into Bypass Bonnet [19].
6. Install Cap [22] onto Bypass Bonnet [19].
7. Apply lubricant to O-Ring [7]. Install O-Ring onto Gland [2].
8. Install Valve Shaft Bushing [3] into Gland [2].
9. Apply lubricant to the groove in the V-Packs [4]. Install V-Packs into Gland [2].
10. Install Stem Bearing [5] into Gland [2].
11. Install Spool Stem [8] into Gland [2].
12. Apply lubricant to O-Ring [14]. Install O-Ring, Spool Bearing Disc [10], and Compression Spring [6] into Spool Bonnet [9].
13. Apply low strength Loctite to threads on Gland [2]. Install Gland into Spool Bonnet [9]. Recommended torque spec of 100 ft-lbs.
14. Apply Anti-Seize to the Gland Assembly thread, Install Gland Assembly into Body [1]. Recommended torque spec of 100 ft-lbs. See Figure 4 and Figure 5 for Spool orientation when installing Gland Assembly.
15. Apply lubricant to O-Ring [14]. Install O-Ring, Spool Bearing Disc [10], and Wave Disc Spring [11] into Spool Plug [12].
16. Apply Anti-Seize to the Plug Assembly thread, Install Spool Plug Assembly into Body [1]. Recommended torque spec of 100 ft-lbs.
17. Tighten Set Screws [16] into Body [1]. Recommended torque spec 50 in-lb.
18. Install Handle Plate Spacer [25] and Lever Plate [24] onto Gland Assembly. Use Lever Plate Screws [26] to retain Handle Plate Spacer and Lever Plate to Body.
19. Install Spring Bearing [27], Handle Spring [31], and Handle [28] onto Gland Assembly. When installing Handle, make sure stem face with notch is facing outlet. (See Figure 3, Detail A)
20. Install Handle Washer [29] and Handle Screw [23] into Spool Stem [8].

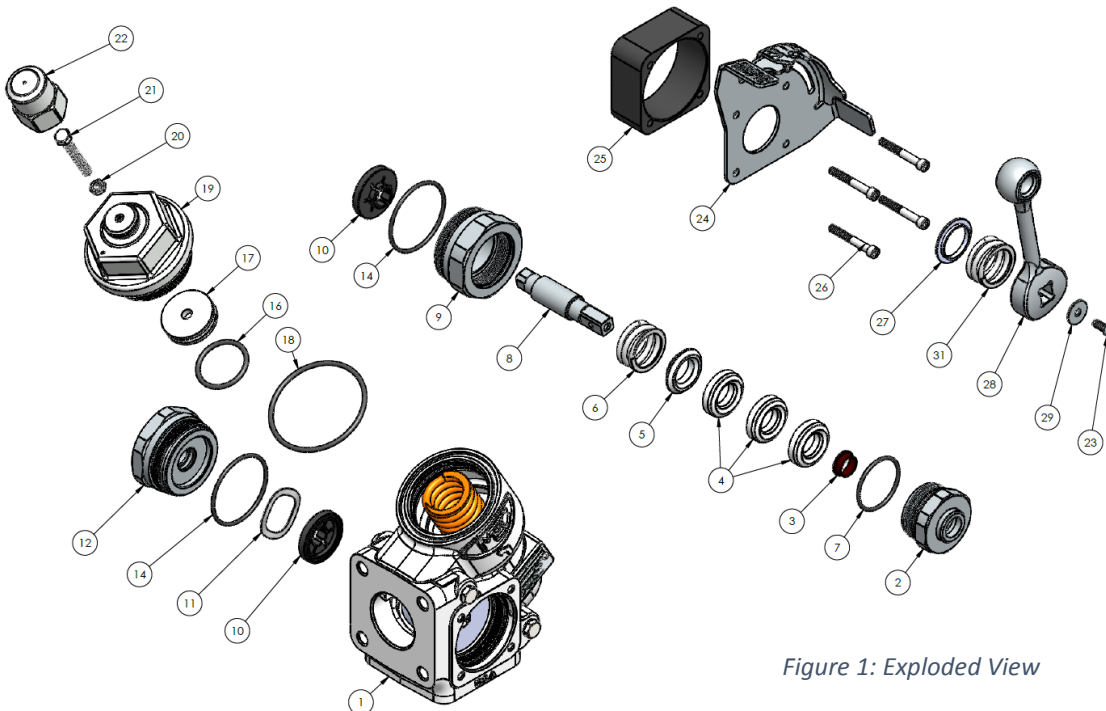


Figure 1: Exploded View

# VERSA FILL™ BYPASS VALVE ME845-SRK SEAL REPAIR KIT

Table 1: BOM

Parts List			REPAIR KITS
Ref. #	DESCRIPTION	QTY	ME845-SRK
1	BODY	1	
2	GLAND	1	
3	STEM BEARING	1	✓
4	V-PACK	3	✓
5	VALVE SHAFT BUSHING	1	✓
6	*PACKING SPRING	1	✓
7	O-RING (GLAND)	1	✓
8	SPOOL STEM	1	
9	SPOOL BONNET	1	
10	SPOOL BEARING DISC	2	✓
11	WAVE DISC SPRING	1	✓
12	SPOOL PLUG	1	
13	**SPOOL ASSEMBLY	1	
14	O-RING (SPOOL BONNET & PLUG)	2	✓
15	**SET SCREW	2	
16	O-RING (SPRING GUIDE)	1	✓
17	SPRING GUIDE	1	
18	O-RING (BYPASS BONNET)	1	✓
19	BYPASS BONNET	1	
20	LOCK NUT	1	
21	STEM	1	
22	CAP	1	
23	HANDLE SCREW	1	
24	LEVER PLATE	1	
25	HANDLE PLATE SPACER	1	
26	LEVER PLATE SCREW	4	
27	SPRING BEARING	1	✓
28	HANDLE MACHINED	1	
29	HANDLE WASHER	1	
30	**O-RING (FLANGE CONNECTIONS)	2	✓
31	*HANDLE SPRING	1	

\*IDENTICAL COMPONENTS

\*\* NOT SHOWN

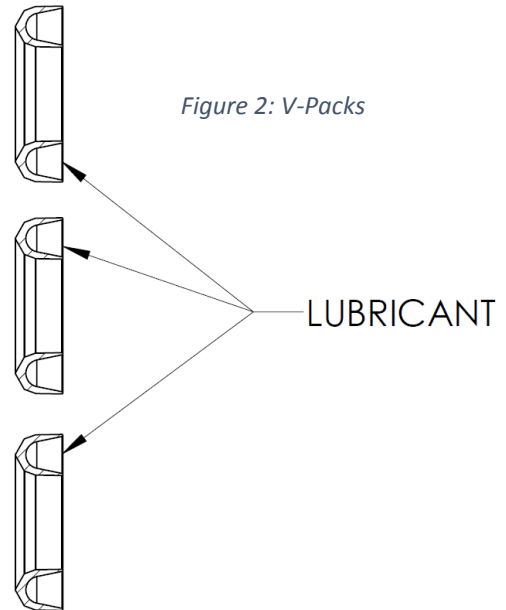


Figure 2: V-Packs

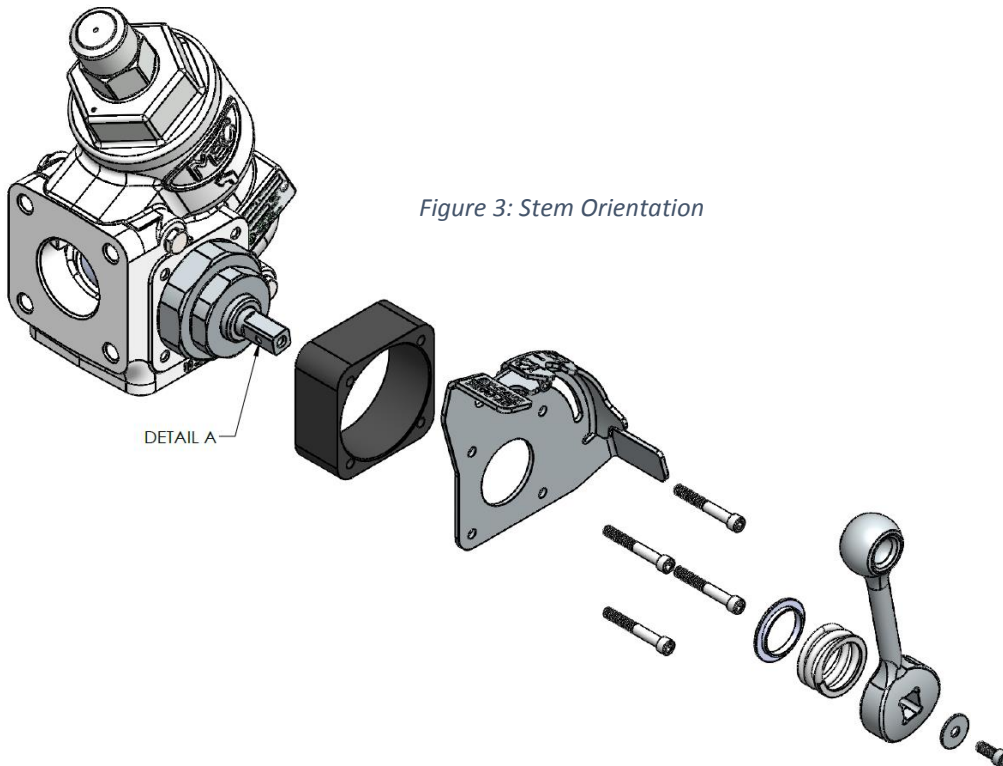


Figure 3: Stem Orientation

VERSA FILL™ BYPASS VALVE  
ME845-SRK SEAL REPAIR KIT

Figure 4: Spool Orientation

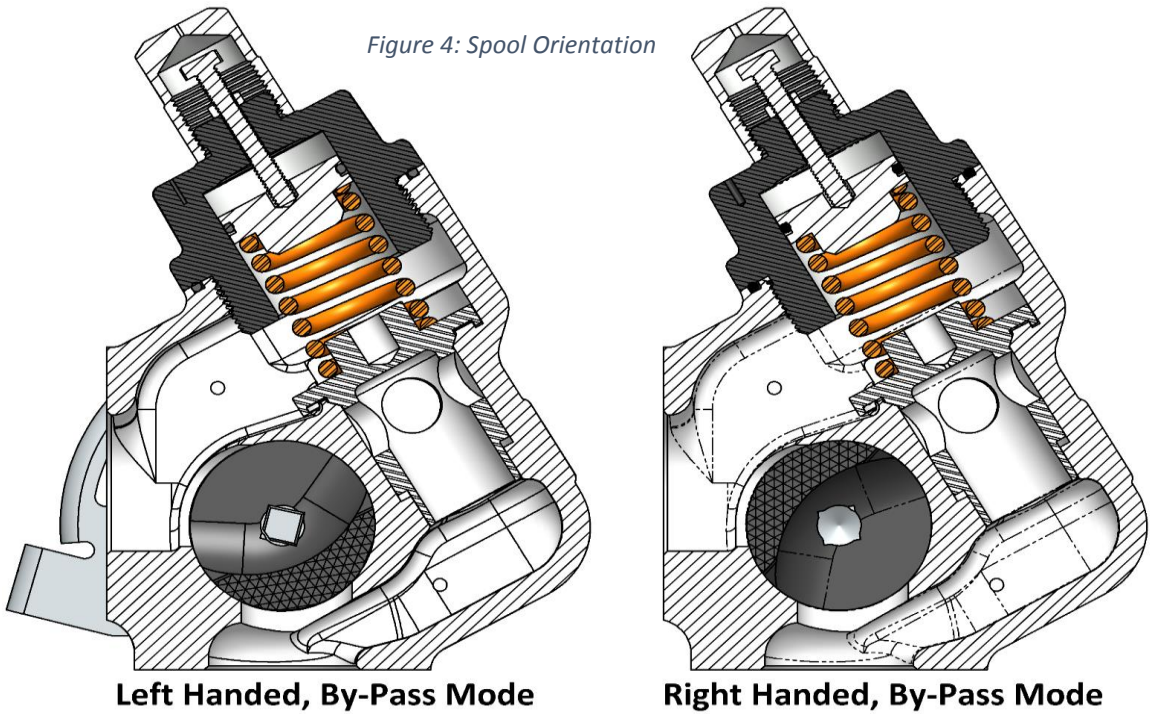


Figure 5: Spool Orientation

