



**ME992-12-VRK**  
**COMPLETE VALVE REPAIR KIT**  
**FOR: ME992-12 1-1/2" INTERNAL VALVE**

**!!!WARNING!!!**

READ AND UNDERSTAND ALL INSTRUCTIONS INCLUDED WITH THIS REPAIR KIT  
RELIEVE ALL PRESSURE FROM SYSTEM BEFORE REMOVING VALVE FOR SERVICE

**NOTE:** Numbers in brackets [ ] refer to the number in the valve component list. Numbers in parenthesis ( ) refer to quantities of the valve component.

**A. Disassembly**

- 1. EVACUATE ALL PRESSURE FROM SYSTEM BEFORE ANY DISASSEMBLY OR REPAIR.**
2. Remove (2) Mounting Screws [2], Cover Plate [3] and (2) Cover Washers [4] from Body [1]. Retain Cover Washers, discard Mounting Screws and Cover Plate.
3. Remove Packing Gland Assembly [5] and discard.
4. If installed in the bottom port, remove the Flush NPT Plug [14] and retain.
5. Remove Nut [13] from Stem [6] and discard.
6. Remove Valve Holder Assembly [12] from Stem [6] and discard.
7. Remove Excess Flow Spring [11] from Stem [6] and either:
  - a. Discard if you have purchased a new Excess Flow Spring; or
  - b. Retain if you did not purchase a new Excess Flow Spring.
8. Remove Upper Stem Washer [10] from Stem [6] and discard.
9. Remove Stem [6], Lower Stem Washer [7], Valve Spring [8], and Stem Guide [9] from Body [1] and discard.
10. Inspect Valve Body [1] and clean if necessary, be sure interior is free of dirt, residue and foreign particles.

**B. Reassembly**

1. Install Lower Stem Washer [7], Valve Spring [8], and Stem Guide [9] on Stem [6] and install into Body [1] with leg of Stem Guide [9] in pocket of Body [1].
2. Install Upper Stem Washer [10] and Excess Flow Spring [11] on Stem [6].
3. Install Valve Holder Assembly [12] on Stem [6].
4. Apply Loctite #271 to threads of Nut [13] and install on Stem [6] and tighten. Ensure no loctite contacts Valve Holder Assembly [12].

5. Install Gland Assembly [5] into Body [1].
6. Apply Loctite #271 to threaded holes in Body [1]. Install (2) Mounting Screws [2], Cover Plate [3] and (2) Cover Washers [4] into Body [1].
7. Install Flush NPT Plug [14] using thread locker approved for use with Anhydrous Ammonia.
8. Connect the valve assembly outlet to a pressure source of at least 150 PSI. Check for leaks at all joints and stem seals using a suitable leak detector solution.

**CAUTION: DO NOT USE THE VALVE IF ANY JOINT CONTINUES TO LEAK UNDER PRESSURE.**



**WARNING:** These products contain a chemical known to the state of California to cause cancer and birth defects or reproductive harm

**C. Component List**

1. Body
2. Mounting Screws; Qty: 2
3. Cover Plate
4. Cover Washers; Qty: 2
5. Gland Assembly
6. Stem
7. Lower Stem Washer
8. Valve Spring
9. Stem Guide
10. Upper Stem Washer
11. Excess Flow Spring
12. Valve Holder Assembly
13. Nut
14. Flush NPT Plug

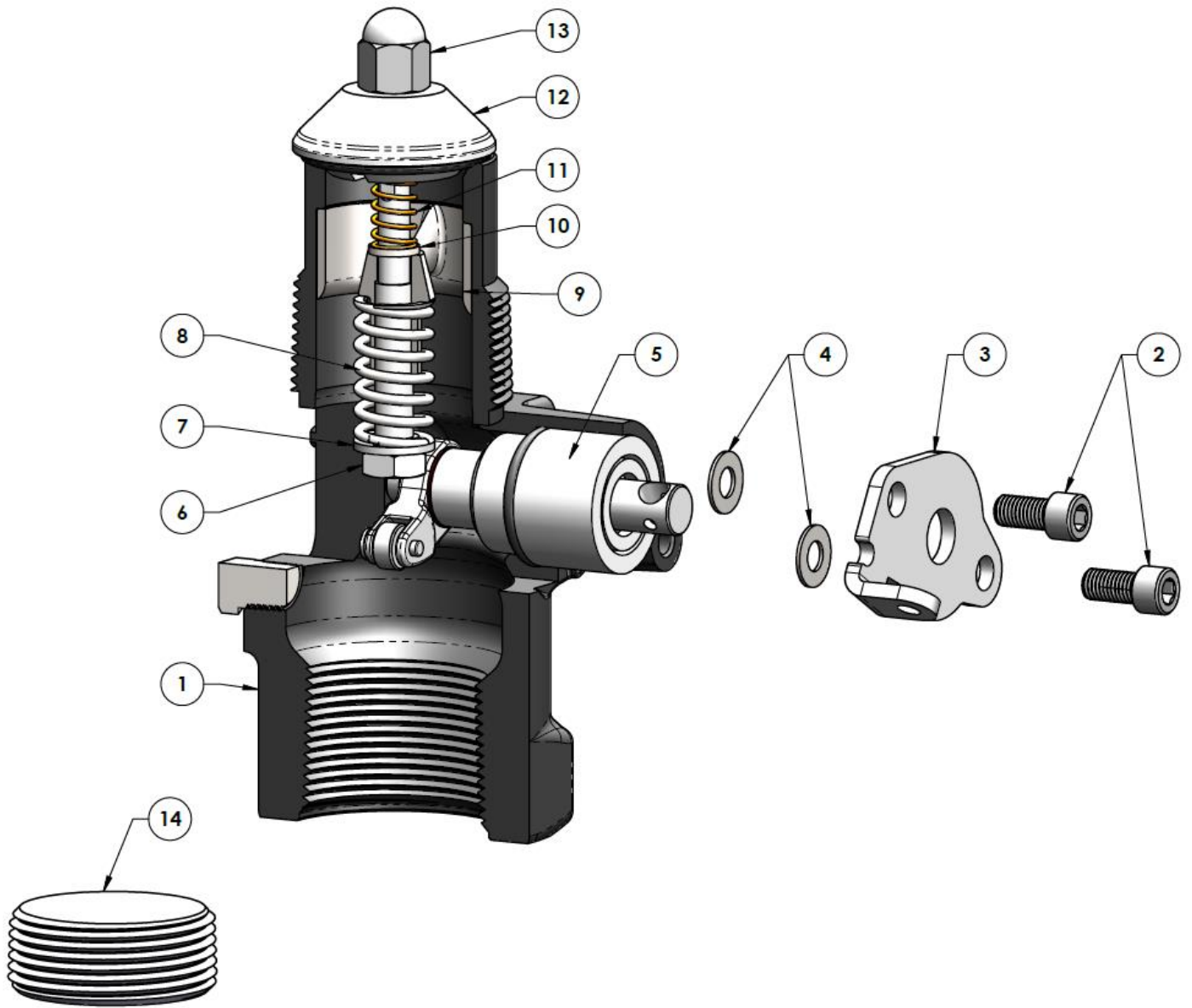
**Marshall Excelsior Company**

1506 George Brown Drive Marshall, MI 49068  
Phone (269) 789-6700 Fax (269) 781-8340

[www.marshallexcelsior.com](http://www.marshallexcelsior.com)

The contents of this publication are for informational purposes only. While every effort has been made to ensure accuracy, these contents are not to be construed as warranties or guarantees, expressed or implied, regarding the products or services described herein or for their use or applicability. Marshall Excelsior Co. reserves the right to modify or improve the designs or specifications of such products at any time without notice. The MEC™ logo is the trademark of Marshall Excelsior Co.

**ME992-12-VRK**  
**COMPLETE VALVE REPAIR KIT**  
**FOR: ME992-12 1-1/2" INTERNAL VALVE**



**Marshall Excelsior Company**

1506 George Brown Drive Marshall, MI 49068

Phone (269) 789-6700 Fax (269) 781-8340

[www.marshallexcelsior.com](http://www.marshallexcelsior.com)

The contents of this publication are for informational purposes only. While every effort has been made to ensure accuracy, these contents are not to be construed as warranties or guarantees, expressed or implied, regarding the products or services described herein or for their use or applicability. Marshall Excelsior Co. reserves the right to modify or improve the designs or specifications of such products at any time without notice. The ME<sup>TM</sup> logo is the trademark of Marshall Excelsior Co.