



ME992-12-SRK
SEAL REPAIR KIT
FOR: ME992-12 1-1/2" INTERNAL VALVES

!!!WARNING!!!
READ AND UNDERSTAND ALL INSTRUCTIONS INCLUDED WITH THIS REPAIR KIT
RELIEVE ALL PRESSURE FROM SYSTEM BEFORE REMOVING VALVE FOR SERVICE

NOTE: Numbers in brackets [] refer to the number in the valve component list. Numbers in parenthesis () refer to quantities of the valve component.



WARNING: These products contain a chemical known to the state of California to cause cancer and birth defects or reproductive harm

A. Disassembly

1. **EVACUATE ALL PRESSURE FROM SYSTEM BEFORE ANY DISASSEMBLY OR REPAIR.**
2. If NPT Plug [9] is in bottom port of Body [1], remove Plug and retain.
3. Remove (2) Mounting Screws [5], and Cover Plate [4] from Body [1] and retain. If Packing Washers are present, remove washers and discard.
4. Remove Packing Gland Assembly [2] and discard. If packing gland is comprised of loose components, remove and discard all loose items.
5. Remove Gland O-ring [3] and discard.
6. Remove Nut [6] from Stem [8] and retain.
7. Remove Valve Holder Assembly [7] from Stem [8] and retain.
8. Remove Seal Retainer [7B] from Valve Holder [7A] and retain.
9. Remove Valve Seal [7D] and Excess Flow Seal [7C] from Valve Holder [7A] and discard.
10. Inspect Valve Body [1] and clean if necessary, be sure interior is free of dirt, residue and foreign particles.

B. Reassembly

1. Install Excess Flow Seal [7C] and Valve Seal [7D] into Valve Holder [7A].
2. Apply Loctite #242 or equivalent threadlocker to Seal Retainer [7B]; install into Valve Holder [7A].
3. Apply Loctite #242 or equivalent threadlocker to threads of Nut [6]; install onto Stem [8] and tighten.
4. Apply Lubriplate #107 or equivalent grease to Gland O-ring [3]; install O-ring onto Gland Assembly [2].
5. If Body [1] has a threaded gland region: Apply Loctite #242 or equivalent threadlocker to threads of Gland Assembly [2].
6. Install Gland Assembly [2] into Body [1].
7. Apply Loctite #242 or equivalent threadlocker to screw holes in Body [1]. Install (2) Mounting Screws [5] through Cover Plate [4] into Body [1].
8. If NPT Plug [9] was removed from bottom port of Body [1], apply Loctite #565 or equivalent thread sealant to Plug and reinstall.
9. Connect one valve assembly outlet to a pressure source of at least 150 PSI / 1040 kPa. Check for leaks at all joints and stem seals using a suitable leak detector solution such as "Marshall Excelsior" leak detector.

!CAUTION!

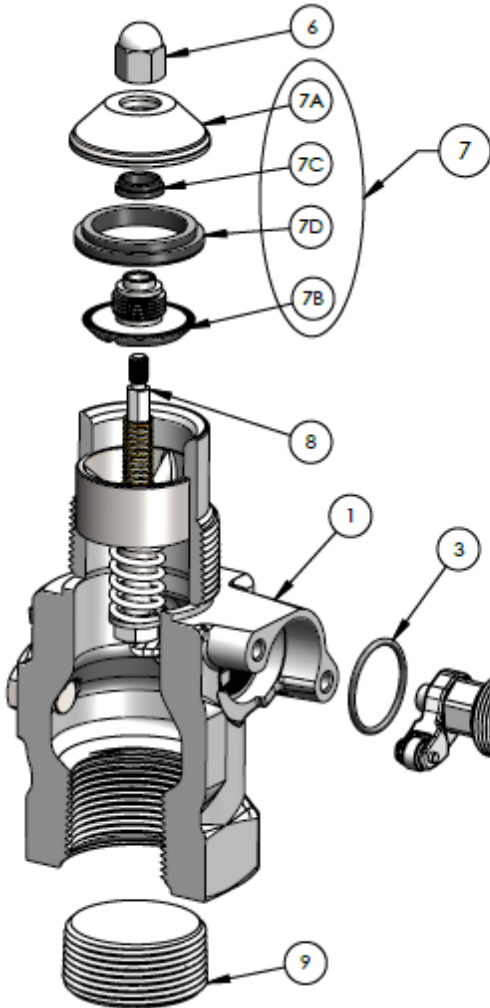
DO NOT USE THE VALVE IF ANY JOINT CONTINUES TO LEAK UNDER PRESSURE.

Marshall Excelsior Company
1506 George Brown Drive Marshall, MI 49068
Phone (269) 789-6700 Fax (269) 781-8340
www.marshallexcelsior.com

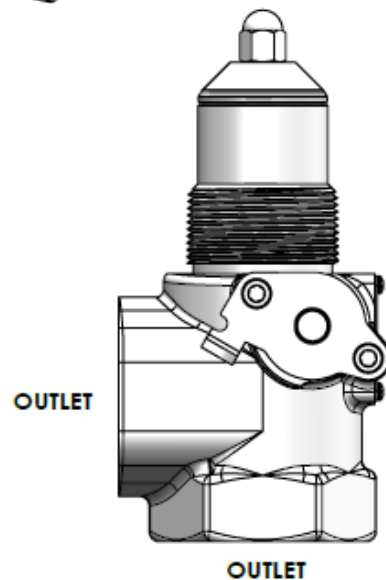
The contents of this publication are for informational purposes only. While every effort has been made to ensure accuracy, these contents are not to be construed as warranties or guarantees, expressed or implied, regarding the products or services described herein or for their use or applicability. Marshall Excelsior Co. reserves the right to modify or improve the designs or specifications of such products at any time without notice. The MEC™ logo is the trademark of Marshall Excelsior Co.

ME992-12-SRK
SEAL REPAIR KIT
FOR: ME992-12 1-1/2" INTERNAL VALVES

Component List



Item No.	Description	Qty	ME990-10-SRK
1	Body	1	
2	Gland Assembly	1	✓
3	Gland O-ring	1	✓
4	Cover Plate	1	
5	Mounting Screws	2	
6	Nut	1	
7	Valve Holder Assembly	1	
7A	Valve Holder	1	
7B	Seal Retainer	1	
7C	Excess Flow Seal	1	✓
7D	Valve Seal	1	✓
8	Valve Stem	1	
9	Flush NPT Plug	1	



Marshall Excelsior Company
1506 George Brown Drive Marshall, MI 49068
Phone (269) 789-6700 Fax (269) 781-8340
www.marshallexcelsior.com

The contents of this publication are for informational purposes only. While every effort has been made to ensure accuracy, these contents are not to be construed as warranties or guarantees, expressed or implied, regarding the products or services described herein or for their use or applicability. Marshall Excelsior Co. reserves the right to modify or improve the designs or specifications of such products at any time without notice. The MEC™ logo is the trademark of Marshall Excelsior Co.